



LIGHT RAIL EXTENSION

NOV 2009

PROJECT BACKGROUND

Planning for the Central Mesa corridor began spring 2007 with an Alternatives Analysis (AA). The AA gathered technical data and community input to help determine which route and transit technology would best serve Mesa. Eight transit options were evaluated. Through analysis, the locally preferred alternative (LPA) was identified. The recommended alternative is to extend light rail on Main Street to Gilbert Road. Phase I implementation is to extend light rail east of Mesa Drive to LeSueur by 2016. Phase II is to extend to Gilbert Road at a future date. Currently, the extension to Gilbert Road is not financed or programmed in the Proposition 400 plan. The LPA was approved by the Mesa City Council, METRO Board of Directors, and the Maricopa Association of Governments in mid 2009. This extension is part of the Regional Transportation Plan and funded by Proposition 400 regional sales tax and a federal grant that will be applied for by METRO.

PROJECT STATUS

METRO and the City of Mesa are currently working with stakeholders to provide further refinement of the LPA. Specifically addressing urban design elements in the downtown area such as:

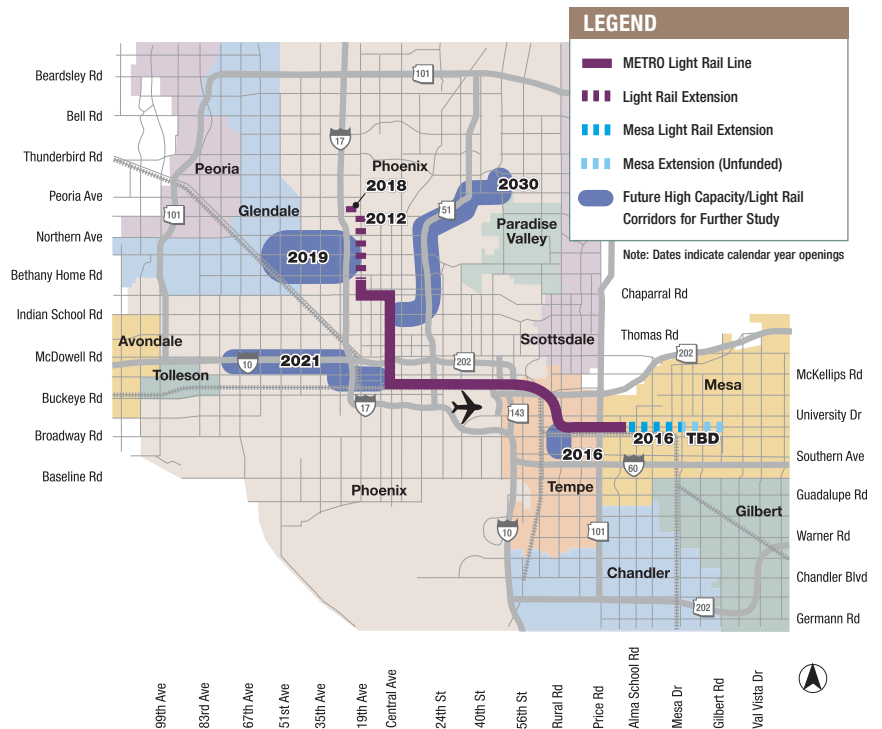
- Maintaining uniqueness of downtown Mesa
- Station location
- On-street parking
- Traffic configuration
- Traction power substation (TPSS) locations
- Station design

In addition, an Environmental Assessment (EA) is being prepared in an effort to seek federal funds for Phase I. The EA will evaluate the project's potential impacts on a variety of factors such as:

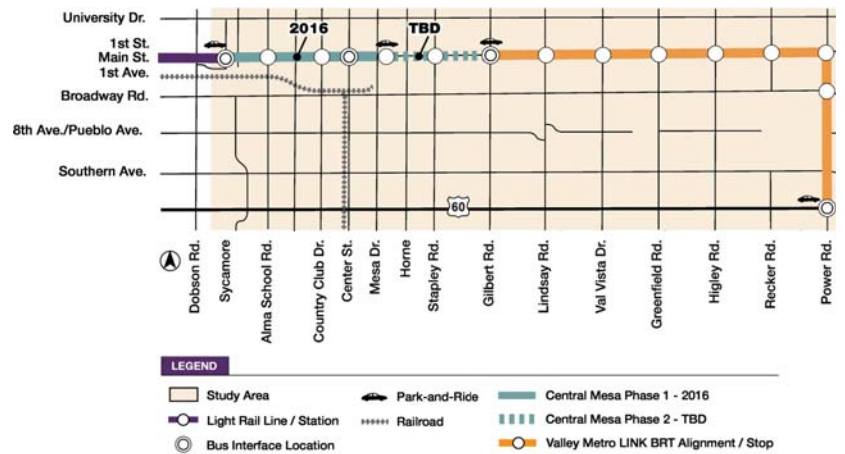
- Noise and vibration
- Air and water quality
- Traffic and parking
- Historic and archaeological resources
- Hazardous materials

METRO plans to begin additional detailed engineering by summer 2010.

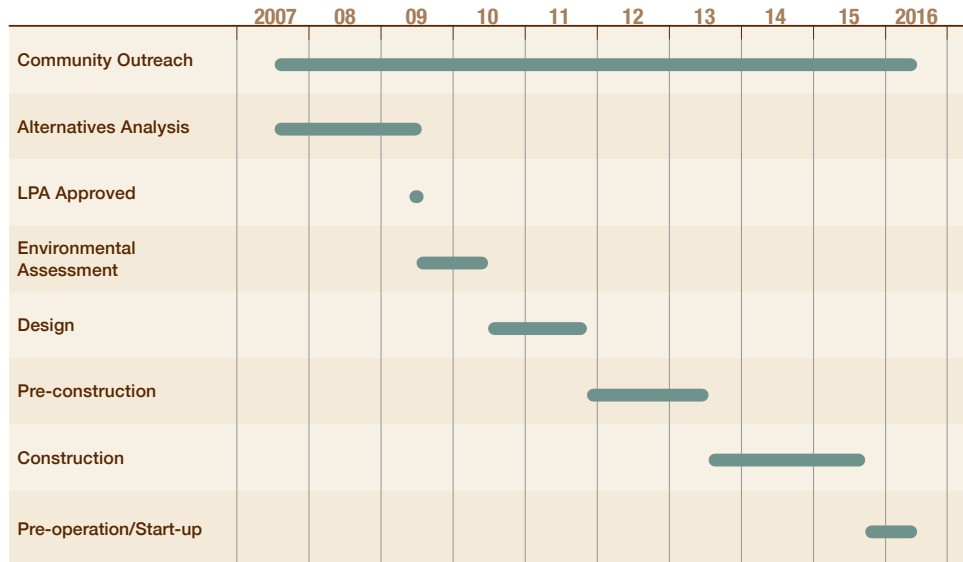
Regional Transportation Plan Transit Corridors



Locally Preferred Alternative



Central Mesa Project Schedule



All dates reflect the year the activity is expected to begin.

SHARE YOUR INPUT

Project Office

Visit the project office located at 18 W. Main Street in Mesa to speak with staff, view maps and give input on the project.

Office Hours

- Wednesdays from 11 a.m.–2 p.m.
- Second Friday of each month in conjunction with the Second Friday Art Walk 6–8:30 p.m.
- A Saturday of each month in conjunction with the MACFest event 10 a.m.–2 p.m.

Mailing List

If you would like to be added to the mailing list to receive the monthly e-newsletter and other project information for the Central Mesa extension please contact one of the Public Involvement staff listed below.

Request Presentation or Event Attendance

If you would like a presentation on the Central Mesa extension or for a staff member to attend a community event, please contact one of the Public Involvement staff listed below.

STAKEHOLDER ADVISORY COMMITTEE

The Central Mesa Light Rail Stakeholder Advisory Committee is an ad hoc committee formed in partnership with the City of Mesa. This Committee is comprised of business owners, property owners and residents who will provide input regarding urban design concepts associated with extending light rail on Main Street from Sycamore to LeSueur. For additional information go to the Mesa Now website at <http://mesaaz.gov/citymgmt/mesa-now/>.



FOR MORE INFORMATION

Carla Kahn, Public Involvement ckahn@metrolightrail.org (602) 744-5552

Lisa Procknow, Public Involvement lprocknow@metrolightrail.org (602) 495-8213

To receive information in alternative formats call (602) 254-7245/TTY (602) 322-4499.

Para recibir esta información en formatos alternativos favor de llamar al (602) 254-7245/TTY (602) 322-4499.

You can also log on to metrolightrail.org/mesa to view past presentations, maps, and other documents.

The Central Mesa Alternatives Analysis/Environmental Assessment has been prepared in accordance with the requirements of the National Environmental Policy Act (NEPA), 40 CFR Parts 1500-1508, and its implementing regulations.