



LIGHT RAIL
and **your**
NEIGHBORHOOD

in Phoenix



METRO LIGHT RAIL

METRO LIGHT RAIL

The METRO light rail system will be an exciting new transportation alternative linking your neighborhood to many of the Valley's most popular entertainment, sporting, cultural, and educational destinations, as well as major employment centers. The city of Phoenix and Valley Metro Rail are committed to maximizing the opportunities and benefits of light rail for the community, while minimizing any adverse impacts to nearby neighborhoods and businesses.



A photosimulation of the light rail station at Central Avenue and Campbell Avenue.

THE COMMUNITY'S PLAN

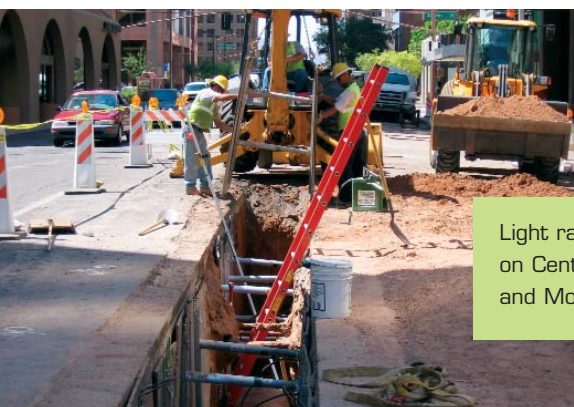
METRO light rail is truly the community's plan. The city and Valley Metro Rail officials have been working with neighborhoods and businesses throughout the process of planning, designing and building the METRO light rail system to ensure that the system reflects the community's needs and desires. As a result of more than 4,000 community meetings, over 80 major design improvements were made.



A light rail community planning meeting

NEIGHBORHOOD AND BUSINESS CONCERNS

Some of the primary neighborhood and business concerns along the route have been property access during construction and operation, neighborhood cut-through traffic, neighborhood parking issues and concerns about an increase in traffic along the route. Project and city staff have been working hard to address all of these issues during the design and construction of the METRO system.



Light rail construction on Central Avenue and Monroe Street

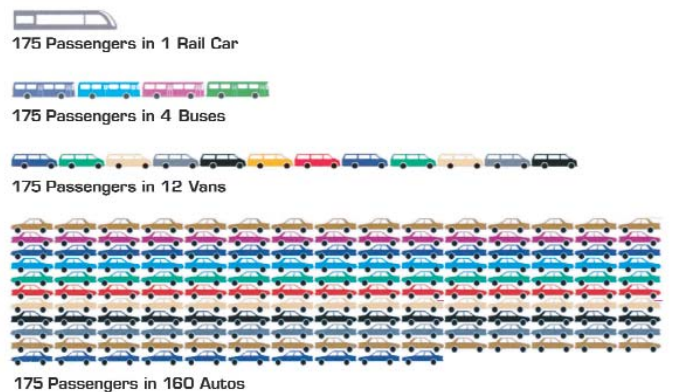
TRAFFIC PATTERNS AND SAFETY

It is impossible to predict how traffic patterns will change due to light rail. However, it is important to note that light rail does not increase traffic - it transfers trips from one mode of travel to another. Some travel patterns will change due to light rail. For safety reasons, several changes will be made along the route, for example:

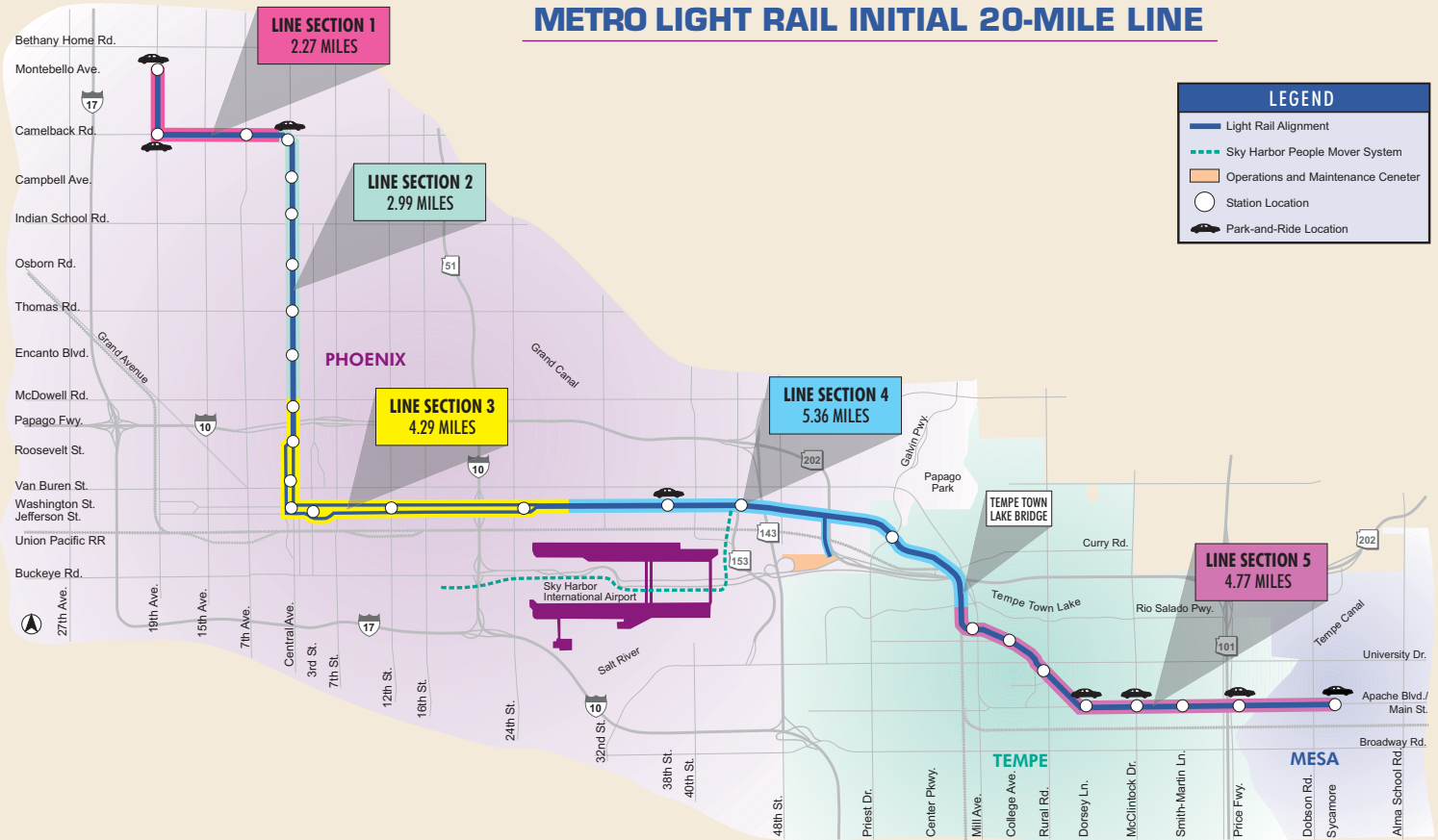
- Pedestrians and motorists will only be able to cross the light rail tracks at signal controlled locations.
- Left turns into and out of driveways or non-signalized local streets will be eliminated.
- Drivers will be able to make left turns and u-turns (with a green arrow) at all signalized intersections along the route.

While the number of travel lanes will be reduced on some streets, more people will be able to travel along these streets because of light rail's ability to move large numbers of passengers. Light rail may mean a change in driving habits, but in the end it will be a valuable investment in our community.

Ways to move 175 passengers during rush hour



METRO LIGHT RAIL INITIAL 20-MILE LINE



LIGHT RAIL CONSTRUCTION

Frequently Asked Questions

Q. Is the contractor required to maintain access to my street during construction?

A. Yes. Access will be maintained; however, on rare occasions it may be necessary to close a local street for a short time. In these instances, residents will be given at least 72 hours advance notice of the closure.

Hotline 602-254-RAIL

Q. Can my child get to school safely during construction?

A. Yes. The contractor is required to submit a school safety plan for approval by the Phoenix Street Transportation Department. School access will be provided, or the contractor will have to make other arrangements with the appropriate schools or school districts during construction.

Hotline 602-254-RAIL



An elementary school crossing in Phoenix.

Q. If the construction noise is too loud, who can I call to help?

A. All calls regarding construction noise should be directed to the project hotline.

Hotline 602-254-RAIL

Q. Who can I call regarding dust complaints coming from light rail construction activities?

A. The contractor is required to meet local and federal dust control requirements. Call to report excessive dust.

Hotline 602-254-RAIL

Q. How do I stop construction vehicles from parking in my neighborhood?

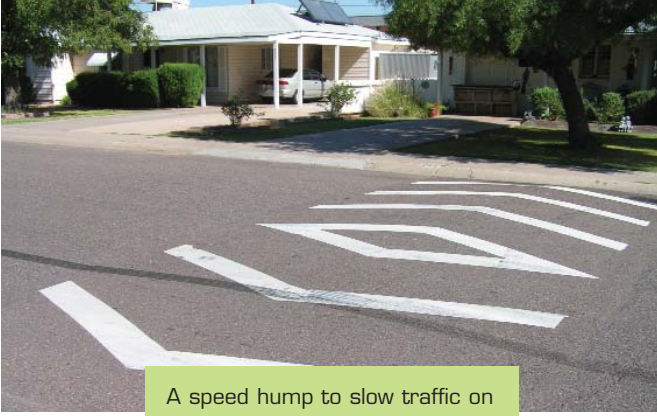
A. Construction vehicles are not allowed to park in your neighborhood and large trucks are not allowed to use local streets in neighborhoods to get to and from the work site. Call to report violations.

Hotline 602-254-RAIL

Q. Will I be able to get to my bus stop during construction?

A. Yes. Some bus stops and routes may need to be temporarily relocated during construction, but all bus stops will be accessible for all residents.

Hotline 602-254-7245



A speed hump to slow traffic on a residential street in Phoenix.

Q. What happens to special events (parades, marathons and other celebrations) during light rail construction?

A. We acknowledge and value the benefits that special events bring to our residents, organizations and the city. Valley Metro Rail will work with special event coordinators to relocate events off the light rail route, but near the existing location.

Parks and Recreation Department 602-261-8604

Q. What will be done during construction to keep traffic out of my neighborhood?

A. As with any major street improvement, traffic will be impacted during construction. The light rail contractor is required to submit a traffic control plan to the city for approval. City staff will review each plan to make sure that they do not detour traffic or encourage short-cut routes through neighborhoods.

Hotline 602-254-RAIL

Q. Will my utilities be affected during construction activities?

A. We will do everything possible to avoid disruptions to utilities during construction. Planned outages may be necessary and will be scheduled for off-peak times. Residents and the City of Phoenix Fire Department will be given notice of any required outages.

Hotline 602-254-RAIL

LIGHT RAIL OPERATION

Frequently Asked Questions

Q. I live near a light rail park-and-ride. Can I expect a lot of extra traffic in my neighborhood during peak times?

A. No. The METRO park-and-rides will be major access points for the system, and we expect them to be heavily used during peak periods. Ample parking will be provided to prevent parking in adjacent neighborhoods, and access points to the park-and-ride lots were designed specifically to discourage cut-through traffic in those neighborhoods.

Hotline 602-254-RAIL

Q. If people begin parking in my neighborhood to catch the train, what can I do?

A. Options may include standard 'No Parking' or 'Resident Only' parking signs. The Resident Permit Parking Program was designed to shield neighborhoods from excessive intruder parking. Residents of eligible neighborhoods may purchase permits to legally park on the street.

Street Transportation Department 602-495-5463

Q. Are the trains noisy?

A. No. Light rail trains are very quiet and produce about as much sound as a late model pick-up truck.

Hotline 602-254-RAIL

Q. How can I apply for new sidewalks and lighting to allow me to walk to the light rail station?

A. The city will work with neighborhoods to help install sidewalk, lighting, and drainage improvements to enhance the quality of life for residents. Neighborhood streets are prioritized and selected based on a set of criteria adopted by the Phoenix City Council.

Street Transportation Department 602-262-6284

Q. What happens if cut-through traffic and speeding occur in my neighborhood after light rail construction?

A. Phoenix has a program to help residents address cut-through traffic and speeding in neighborhoods. Residents on eligible local streets must demonstrate neighborhood support and participate in cost sharing for traffic mitigation measures and speed humps. Residents also can contact the City of Phoenix Police Department to request radar speed enforcement.

Street Transportation Department 602-262-6284
Police Department 602-534-7733

Q. Who is responsible for enforcing zoning and neighborhood blight ordinances (conditions such as inoperable cars, junk, litter, and debris)?

A. The Neighborhood Preservation Division will investigate all complaints to help improve the aesthetics and quality of life in your neighborhood.

Neighborhood Services Department 602-262-7844

A light rail photosimulation of the station at Central and Osborn in Phoenix.



WHAT ARE WE DOING TO KEEP TRAFFIC OUT OF YOUR NEIGHBORHOOD?

A new state-of-the-art traffic signal system along the METRO route will help move traffic safely and efficiently. Once METRO light rail is operating, we expect traffic to continue to flow on our major streets with minimal impacts on neighborhoods. If unanticipated problems arise, both city of Phoenix and Valley Metro Rail staff will be available to assist you in a variety of ways. Your concerns are important, so please be aware of what the city and project staff can do regarding neighborhood issues.

What We Can Do

- Provide a quick response to address concerns affecting your neighborhood.
- Provide information about city programs to assist eligible neighborhoods with traffic and other related issues.
- Meet with residents and neighborhood groups to give project updates and answer questions.
- Provide ongoing communication regarding light rail operation.

What We Cannot Do

- Waive policies or reduce eligibility criteria and costs associated with city programs and City Council adopted ordinances.
- Impose traffic restrictions when there is no documented problem and/or neighborhood consensus on a solution.

If you have questions or concerns not addressed in this publication, please contact us at 602-254-RAIL (7245) or rail@valleymetro.org.

This publication can be made available in Braille, large print, audio tape, or cassette tape upon request.

Contact the Street Transportation Department at 602-262-6284 if you would like any of these services.

Our TTY number is 602-256-4286.