

Ongoing Monthly Comparisons from 2004 thru 2010

Monthly Ridership

	<u>2004</u>	<u>2005</u>	<u>2006</u>	<u>2007</u>	<u>2008</u>	<u>2009</u>	<u>2010</u>	<u>Percentage Increase/Decrease</u>						
								<u>2004/2005</u>	<u>2005/2006</u>	<u>2006/2007</u>	<u>2007/2008</u>	<u>2008/2009</u>	<u>2009/2010</u>	
Jan	4,510,212	4,579,568	5,029,162	4,770,159	4,511,065	5,532,248	5,565,865	Jan	1.5%	9.8%	-5.2%	-5.4%	22.6%	0.6%
Feb	4,418,021	4,522,683	4,822,888	4,674,868	4,963,724	5,294,717	5,606,406	Feb	2.4%	6.6%	-3.1%	6.2%	6.7%	5.9%
Mar	4,863,481	5,065,284	5,169,902	5,033,545	5,270,507	5,553,564		Mar	4.1%	2.1%	-2.6%	4.7%	5.4%	-100.0%
Apr	5,003,306	4,916,619	4,874,768	5,040,574	5,741,342	5,605,069		Apr	-1.7%	-0.9%	3.4%	13.9%	-2.4%	-100.0%
May	4,471,234	4,663,982	4,987,925	5,051,228	5,496,427	5,022,820		May	4.3%	6.9%	1.3%	8.8%	-8.6%	-100.0%
Jun	4,304,914	4,419,776	4,554,879	4,558,889	5,125,054	4,866,737		Jun	2.7%	3.1%	0.1%	12.4%	-5.0%	-100.0%
Jul	4,150,523	4,033,762	4,116,002	4,321,778	5,215,992	4,006,638		Jul	-2.8%	2.0%	5.0%	20.7%	-23.2%	-100.0%
Aug	4,737,382	5,068,134	5,139,400	5,304,165	5,273,984	4,644,952		Aug	7.0%	1.4%	3.2%	-0.6%	-11.9%	-100.0%
Sep	4,999,006	5,349,647	5,066,946	5,013,535	5,881,334	4,911,180		Sep	7.0%	-5.3%	-1.1%	17.3%	-16.5%	-100.0%
Oct	5,006,669	5,365,782	5,150,801	5,707,430	6,476,733	5,080,657		Oct	7.2%	-4.0%	10.8%	13.5%	-21.6%	-100.0%
Nov	4,757,583	5,144,224	4,909,560	4,875,076	5,433,295	4,681,145		Nov	8.1%	-4.6%	-0.7%	11.5%	-13.8%	-100.0%
Dec	4,547,032	4,834,702	4,554,438	5,268,906	5,603,751	4,642,892		Dec	6.3%	-5.8%	15.7%	6.4%	-17.1%	-100.0%

Average Daily Weekday by Month

Local	<u>2004</u>	<u>2005</u>	<u>2006</u>	<u>2007</u>	<u>2008</u>	<u>2009</u>	<u>2010</u>	<u>Percentage Increase/Decrease</u>						
								<u>2004/2005</u>	<u>2005/2006</u>	<u>2006/2007</u>	<u>2007/2008</u>	<u>2008/2009</u>	<u>2009/2010</u>	
Jan	178,818	182,458	192,239	188,047	179,373	215,285	219,700	Jan	2.0%	5.4%	-2.2%	-4.6%	20.0%	2.1%
Feb	185,225	192,105	208,728	202,499	203,955	221,149	235,870	Feb	3.7%	8.7%	-3.0%	0.7%	8.4%	6.7%
Mar	181,212	189,519	194,121	195,984	210,447	208,493		Mar	4.6%	2.4%	1.0%	7.4%	-0.9%	-100.0%
Apr	196,571	195,410	199,254	208,017	227,775	216,325		Apr	-0.6%	2.0%	4.4%	9.5%	-5.0%	-100.0%
May	180,076	183,884	196,088	198,979	218,877	199,291		May	2.1%	6.6%	1.5%	10.0%	-8.9%	-100.0%
Jun	165,576	169,285	180,471	183,781	208,263	185,004		Jun	2.2%	6.6%	1.8%	13.3%	-11.2%	-100.0%
Jul	154,855	159,688	168,387	186,260	203,417	146,842		Jul	3.1%	5.4%	10.6%	9.2%	-27.8%	-100.0%
Aug	181,640	188,185	196,562	203,165	209,576	180,421		Aug	3.6%	4.5%	3.4%	3.2%	-13.9%	-100.0%
Sep	202,631	214,822	213,851	218,551	233,896	197,533		Sep	6.0%	-0.5%	2.2%	7.0%	-15.5%	-100.0%
Oct	197,072	210,134	203,302	217,570	239,513	192,150		Oct	6.6%	-3.3%	7.0%	10.1%	-19.8%	-100.0%
Nov	192,226	206,487	202,388	200,304	225,381	192,782		Nov	7.4%	-2.0%	-1.0%	12.5%	-14.5%	-100.0%
Dec	171,158	183,849	188,289	219,898	217,872	176,769		Dec	7.4%	2.4%	16.8%	-0.9%	-18.9%	-100.0%

Ongoing Monthly Comparisons from 2004 thru 2010

Average Daily Weekday by Month

Express								Percentage Increase/Decrease						
	<u>2004</u>	<u>2005</u>	<u>2006</u>	<u>2007</u>	<u>2008</u>	<u>2009</u>	<u>2010</u>	<u>2004/2005</u>	<u>2005/2006</u>	<u>2006/2007</u>	<u>2007/2008</u>	<u>2007/2008</u>	<u>2009/2010</u>	
Jan	4,849	5,279	5,606	5,852	6,501	7,297	6,208	Jan	8.9%	6.2%	4.4%	11.1%	12.2%	-14.9%
Feb	4,349	5,297	5,549	5,848	6,341	7,081	6,165	Feb	21.8%	4.8%	5.4%	8.4%	11.7%	-12.9%
Mar	4,727	5,432	5,165	5,919	6,853	6,965		Mar	14.9%	-4.9%	14.6%	15.8%	1.6%	-100.0%
Apr	4,841	5,671	5,488	6,298	7,423	6,765		Apr	17.1%	-3.2%	14.8%	17.9%	-8.9%	-100.0%
May	5,069	5,608	6,136	6,561	7,504	6,609		May	10.6%	9.4%	6.9%	14.4%	-11.9%	-100.0%
Jun	5,139	5,576	5,820	6,474	8,579	6,803		Jun	8.5%	4.4%	11.2%	32.5%	-20.7%	-100.0%
Jul	4,680	5,263	5,511	6,391	8,819	6,117		Jul	12.5%	4.7%	16.0%	38.0%	-30.6%	-100.0%
Aug	5,233	5,825	6,022	6,169	7,823	6,688		Aug	11.3%	3.4%	2.4%	26.8%	-14.5%	-100.0%
Sep	5,335	6,582	5,915	6,134	8,351	6,694		Sep	23.4%	-10.1%	3.7%	36.1%	-19.8%	-100.0%
Oct	5,256	6,234	5,841	6,238	7,531	6,241		Oct	18.6%	-6.3%	6.8%	20.7%	-17.1%	-100.0%
Nov	4,850	5,800	5,555	5,962	6,604	5,775		Nov	19.6%	-4.2%	7.3%	10.8%	-12.6%	-100.0%
Dec	4,293	4,906	5,101	4,300	6,769	5,492		Dec	14.3%	4.0%	-15.7%	57.4%	-18.9%	-100.0%

Average Daily Saturday by Month

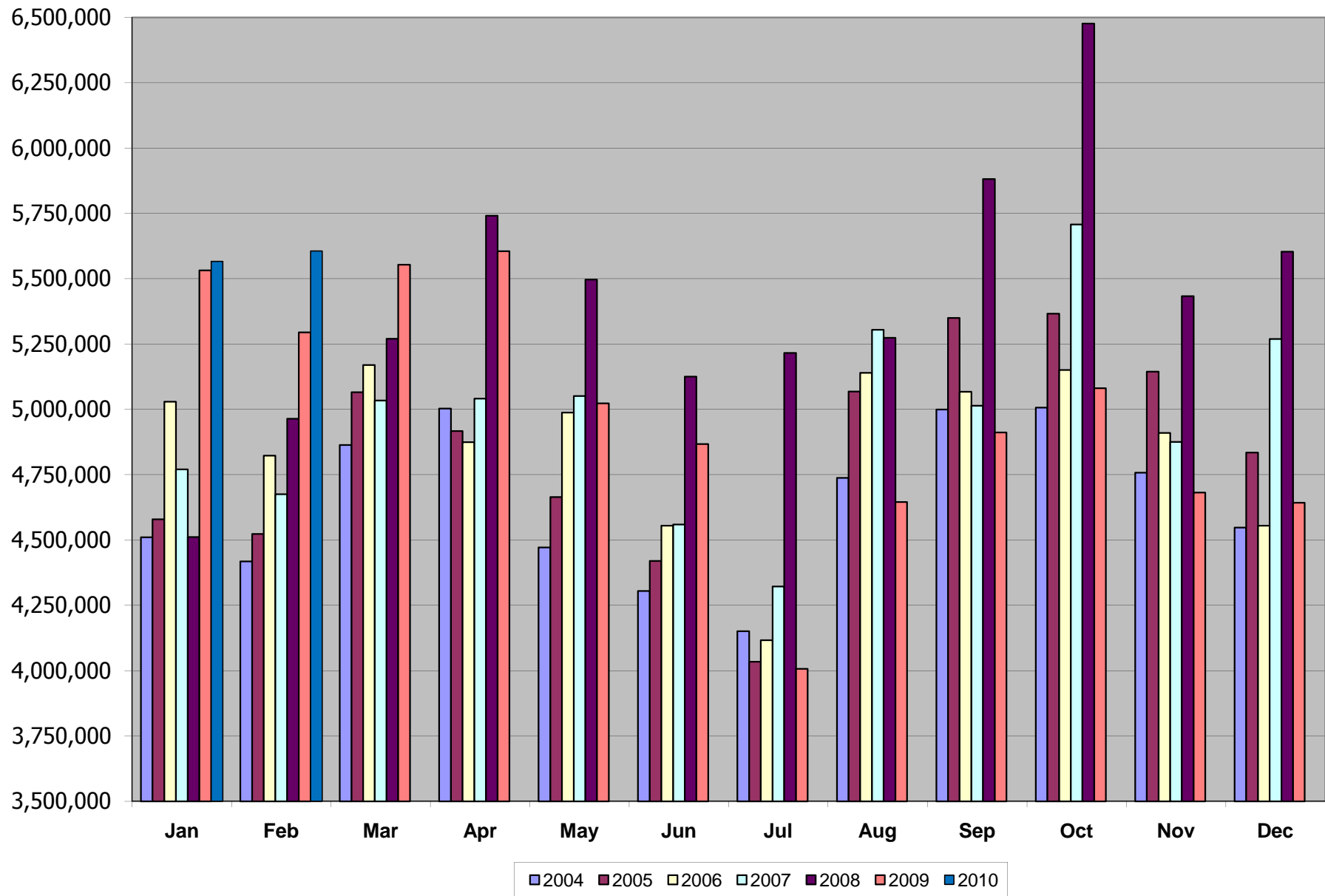
								Percentage Increase/Decrease						
	<u>2004</u>	<u>2005</u>	<u>2006</u>	<u>2007</u>	<u>2008</u>	<u>2009</u>	<u>2010</u>	<u>2004/2005</u>	<u>2005/2006</u>	<u>2006/2007</u>	<u>2007/2008</u>	<u>2008/2009</u>	<u>2009/2010</u>	
Jan	89,344	92,476	103,441	95,353	87,074	109,380	120,600	Jan	3.5%	11.9%	-7.8%	-8.7%	25.6%	10.3%
Feb	94,122	90,194	104,667	100,261	107,674	111,668	119,309	Feb	-4.2%	16.0%	-4.2%	7.4%	3.7%	6.8%
Mar	94,257	94,166	92,422	98,360	108,519	109,341		Mar	-0.1%	-1.9%	6.4%	10.3%	0.8%	-100.0%
Apr	93,263	95,908	100,782	97,471	114,730	103,938		Apr	2.8%	5.1%	-3.3%	17.7%	-9.4%	-100.0%
May	92,886	93,100	97,498	96,984	111,812	100,273		May	0.2%	4.7%	-0.5%	15.3%	-10.3%	-100.0%
Jun	89,045	92,611	93,674	95,549	107,507	96,264		Jun	4.0%	1.1%	2.0%	12.5%	-10.5%	-100.0%
Jul	84,528	88,844	89,101	100,404	106,728	100,163		Jul	5.1%	0.3%	12.7%	6.3%	-6.2%	-100.0%
Aug	93,726	97,427	98,049	101,375	105,955	85,111		Aug	3.9%	0.6%	3.4%	4.5%	-19.7%	-100.0%
Sep	93,742	102,863	99,518	104,243	112,952	85,699		Sep	9.7%	-3.3%	4.7%	8.4%	-24.1%	-100.0%
Oct	97,667	105,622	98,235	111,081	124,754	92,509		Oct	8.1%	-7.0%	13.1%	12.3%	-25.8%	-100.0%
Nov	95,854	103,388	98,165	100,204	122,433	90,269		Nov	7.9%	-5.1%	2.1%	22.2%	-26.3%	-100.0%
Dec	93,493	95,777	97,946	122,473	118,494	89,621		Dec	2.4%	2.3%	25.0%	-3.2%	-24.4%	-100.0%

Ongoing Monthly Comparisons from 2004 thru 2010

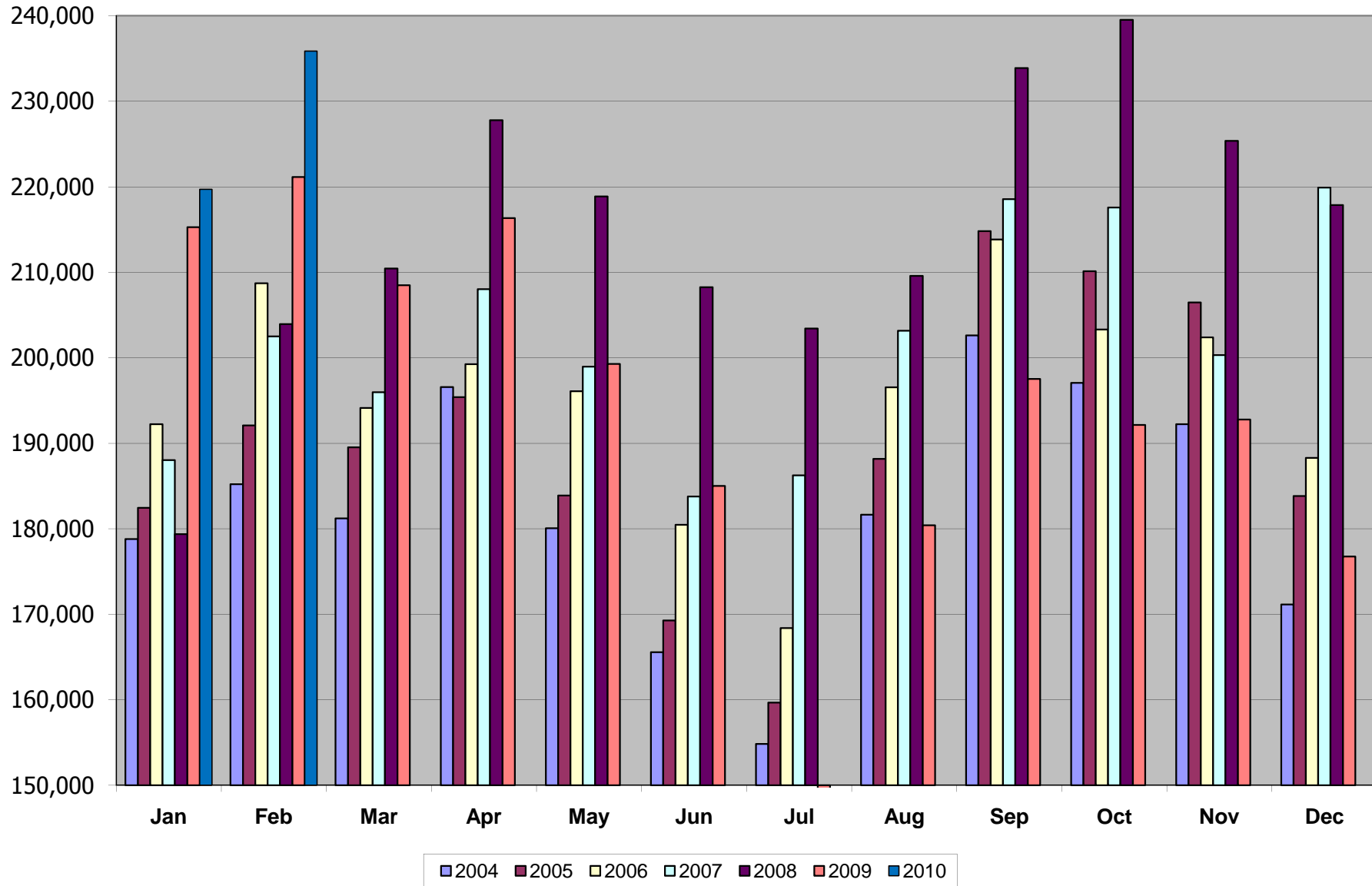
Average Daily Sunday by Month

	<u>2004</u>	<u>2005</u>	<u>2006</u>	<u>2007</u>	<u>2008</u>	<u>2009</u>	<u>2010</u>	<u>Percentage Increase/Decrease</u>						
								<u>2004/2005</u>	<u>2005/2006</u>	<u>2006/2007</u>	<u>2007/2008</u>	<u>2008/2009</u>	<u>2009/2010</u>	
Jan	44,518	50,930	54,232	50,447	47,883	67,394	77,819	Jan	14.4%	6.5%	-7.0%	-5.1%	40.7%	15.5%
Feb	50,253	53,701	57,753	56,214	65,579	71,062	73,334	Feb	6.9%	7.5%	-2.7%	16.7%	8.4%	3.2%
Mar	52,632	51,336	54,205	57,664	61,579	75,167		Mar	-2.5%	5.6%	6.4%	6.8%	22.1%	-100.0%
Apr	50,045	53,553	55,216	56,578	67,852	70,577		Apr	7.0%	3.1%	2.5%	19.9%	4.0%	-100.0%
May	50,424	52,168	56,953	57,196	68,861	67,561		May	3.5%	9.2%	0.4%	20.4%	-1.9%	-100.0%
Jun	47,810	50,908	53,024	55,304	65,616	65,716		Jun	6.5%	4.2%	4.3%	18.6%	0.2%	-100.0%
Jul	44,739	48,633	50,839	57,568	66,858	65,257		Jul	8.7%	4.5%	13.2%	16.1%	-2.4%	-100.0%
Aug	50,402	53,820	56,854	57,220	67,462	57,956		Aug	6.8%	5.6%	0.6%	17.9%	-14.1%	-100.0%
Sep	50,875	57,696	57,029	59,430	69,989	58,870		Sep	13.4%	-1.2%	4.2%	17.8%	-15.9%	-100.0%
Oct	53,754	58,625	57,211	66,402	76,854	63,868		Oct	9.1%	-2.4%	16.1%	15.7%	-16.9%	-100.0%
Nov	47,093	54,461	53,328	54,866	70,573	58,436		Nov	15.6%	-2.1%	2.9%	28.6%	-17.2%	-100.0%
Dec	46,167	50,906	49,911	66,626	65,827	55,376		Dec	10.3%	-2.0%	33.5%	-1.2%	-15.9%	-100.0%

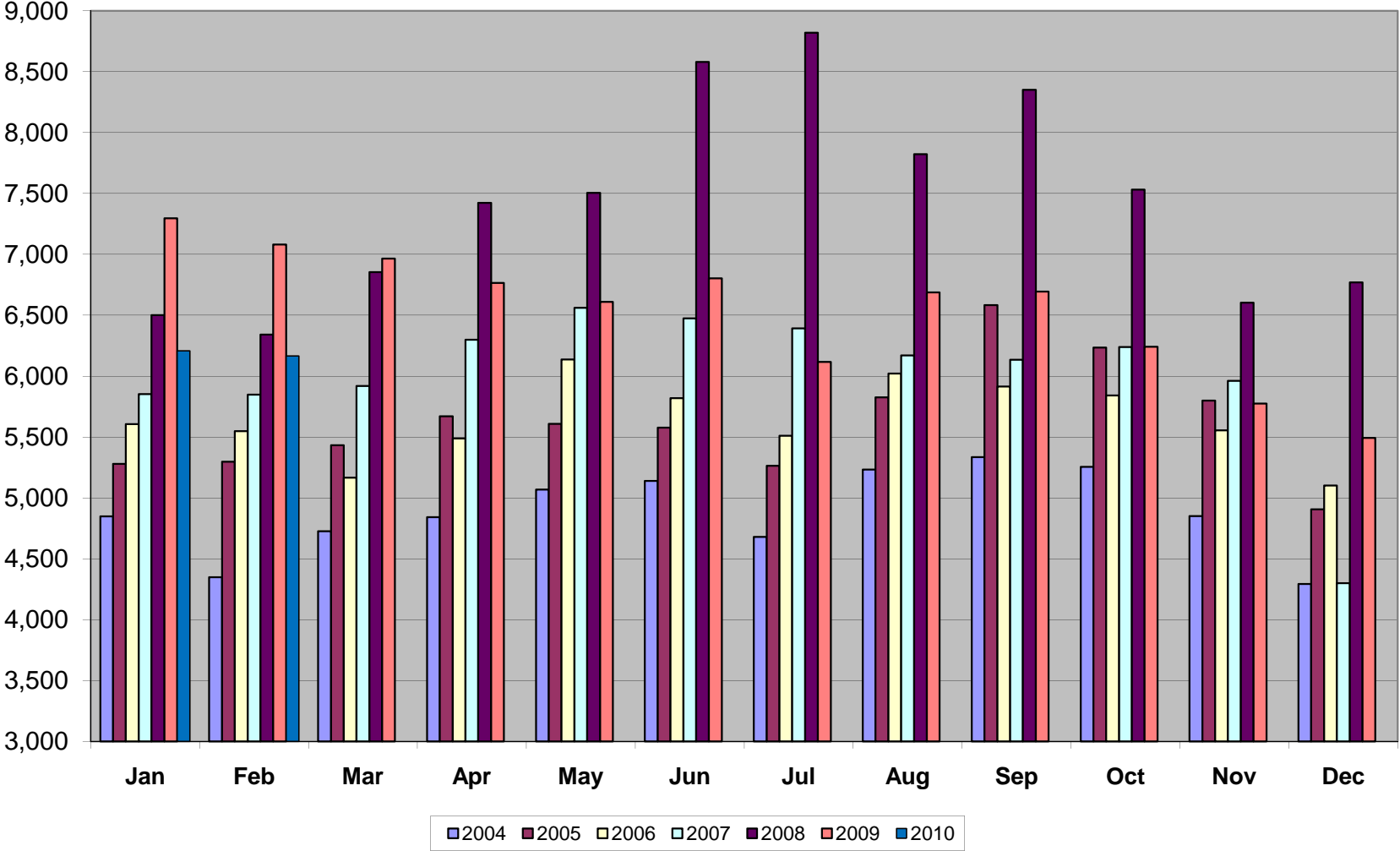
Total Monthly Ridership



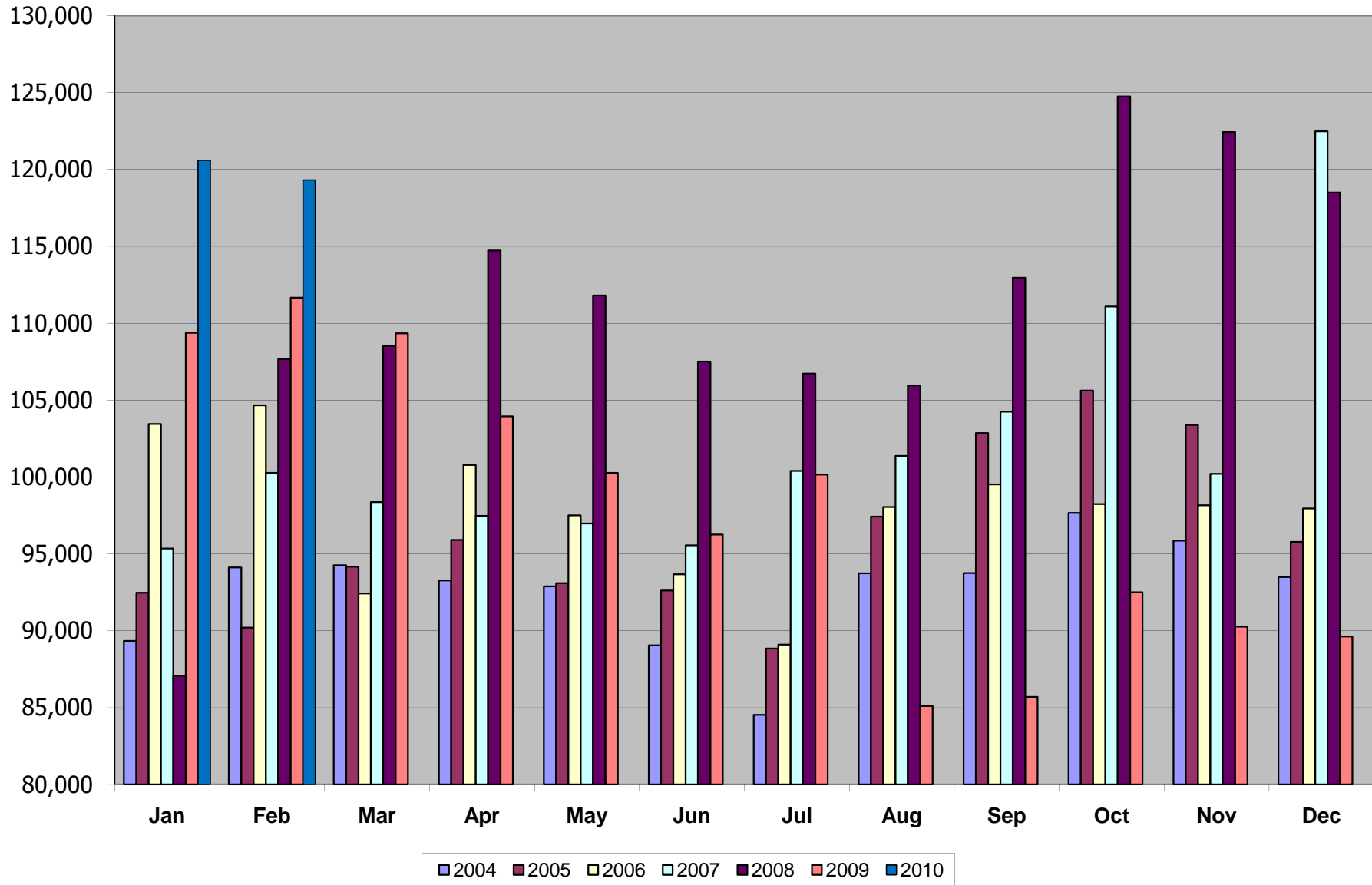
Weekday Local Average Daily Ridership



Weekday Express Average Daily Ridership



Saturday Average Daily Ridership



Sunday Average Daily Ridership

