

## Ongoing Monthly Comparisons from 2004 thru 2011

### Monthly Ridership

									Percentage Increase/Decrease							
	<u>2004</u>	<u>2005</u>	<u>2006</u>	<u>2007</u>	<u>2008</u>	<u>2009</u>	<u>2010</u>	<u>2011</u>	<u>2004/2005</u>	<u>2005/2006</u>	<u>2006/2007</u>	<u>2007/2008</u>	<u>2008/2009</u>	<u>2009/2010</u>	<u>2010/2011</u>	
<b>Jan</b>	4,510,212	4,579,568	5,029,162	4,770,159	4,511,065	6,444,131	5,565,865	5,508,996	<b>Jan</b>	1.5%	9.8%	-5.2%	-5.4%	42.9%	-13.6%	-1.0%
<b>Feb</b>	4,418,021	4,522,683	4,822,888	4,674,868	4,963,724	6,202,769	5,606,406	5,582,430	<b>Feb</b>	2.4%	6.6%	-3.1%	6.2%	25.0%	-9.6%	-0.4%
<b>Mar</b>	4,863,481	5,065,284	5,169,902	5,033,545	5,270,507	6,526,525	6,162,853	6,294,638	<b>Mar</b>	4.1%	2.1%	-2.6%	4.7%	23.8%	-5.6%	2.1%
<b>Apr</b>	5,003,306	4,916,619	4,874,768	5,040,574	5,741,342	6,649,206	6,060,958	6,102,499	<b>Apr</b>	-1.7%	-0.9%	3.4%	13.9%	15.8%	-8.8%	0.7%
<b>May</b>	4,471,234	4,663,982	4,987,925	5,051,228	5,496,427	5,951,079	5,511,112	5,633,142	<b>May</b>	4.3%	6.9%	1.3%	8.8%	8.3%	-7.4%	2.2%
<b>Jun</b>	4,304,914	4,419,776	4,554,879	4,558,889	5,125,054	5,682,302	5,079,860	5,198,532	<b>Jun</b>	2.7%	3.1%	0.1%	12.4%	10.9%	-10.6%	2.3%
<b>Jul</b>	4,150,523	4,033,762	4,116,002	4,321,778	5,215,992	4,757,189	4,687,777	4,857,409	<b>Jul</b>	-2.8%	2.0%	5.0%	20.7%	-8.8%	-1.5%	3.6%
<b>Aug</b>	4,737,382	5,068,134	5,139,400	5,304,165	5,273,984	5,527,278	5,641,003	6,138,114	<b>Aug</b>	7.0%	1.4%	3.2%	-0.6%	4.8%	2.1%	8.8%
<b>Sep</b>	4,999,006	5,349,647	5,066,946	5,013,535	5,881,334	5,965,467	5,976,738	6,366,654	<b>Sep</b>	7.0%	-5.3%	-1.1%	17.3%	1.4%	0.2%	6.5%
<b>Oct</b>	5,006,669	5,365,782	5,150,801	5,707,430	6,476,733	6,205,582	6,002,948	6,431,001	<b>Oct</b>	7.2%	-4.0%	10.8%	13.5%	-4.2%	-3.3%	7.1%
<b>Nov</b>	4,757,583	5,144,224	4,909,560	4,875,076	5,433,295	5,684,648	5,671,828	6,017,319	<b>Nov</b>	8.1%	-4.6%	-0.7%	11.5%	4.6%	-0.2%	6.1%
<b>Dec</b>	4,547,032	4,834,702	4,554,438	5,268,906	5,603,751	5,594,785	5,306,820	5,713,630	<b>Dec</b>	6.3%	-5.8%	15.7%	6.4%	-0.2%	-5.1%	7.7%

### Average Daily Weekday by Month

Local									Percentage Increase/Decrease							
	<u>2004</u>	<u>2005</u>	<u>2006</u>	<u>2007</u>	<u>2008</u>	<u>2009</u>	<u>2010</u>	<u>2011</u>	<u>2004/2005</u>	<u>2005/2006</u>	<u>2006/2007</u>	<u>2007/2008</u>	<u>2008/2009</u>	<u>2009/2010</u>	<u>2010/2011</u>	
<b>Jan</b>	178,818	182,458	192,239	188,047	179,373	245,668	219,700	227,562	<b>Jan</b>	2.0%	5.4%	-2.2%	-4.6%	37.0%	-10.6%	3.6%
<b>Feb</b>	185,225	192,105	208,728	202,499	203,955	256,426	235,870	242,044	<b>Feb</b>	3.7%	8.7%	-3.0%	0.7%	25.7%	-8.0%	2.6%
<b>Mar</b>	181,212	189,519	194,121	195,984	210,447	242,868	226,355	229,684	<b>Mar</b>	4.6%	2.4%	1.0%	7.4%	15.4%	-6.8%	1.5%
<b>Apr</b>	196,571	195,410	199,254	208,017	227,775	253,711	232,298	239,215	<b>Apr</b>	-0.6%	2.0%	4.4%	9.5%	11.4%	-8.4%	3.0%
<b>May</b>	180,076	183,884	196,088	198,979	218,877	232,845	215,470	216,107	<b>May</b>	2.1%	6.6%	1.5%	10.0%	6.4%	-7.5%	0.3%
<b>Jun</b>	165,576	169,285	180,471	183,781	208,263	214,473	192,778	196,585	<b>Jun</b>	2.2%	6.6%	1.8%	13.3%	3.0%	-10.1%	2.0%
<b>Jul</b>	154,855	159,688	168,387	186,260	203,417	173,484	183,044	188,402	<b>Jul</b>	3.1%	5.4%	10.6%	9.2%	-14.7%	5.5%	2.9%
<b>Aug</b>	181,640	188,185	196,562	203,165	209,576	213,532	214,911	225,711	<b>Aug</b>	3.6%	4.5%	3.4%	3.2%	1.9%	0.6%	5.0%
<b>Sep</b>	202,631	214,822	213,851	218,551	233,896	238,305	236,853	253,219	<b>Sep</b>	6.0%	-0.5%	2.2%	7.0%	1.9%	-0.6%	6.9%
<b>Oct</b>	197,072	210,134	203,302	217,570	239,513	233,229	232,016	247,451	<b>Oct</b>	6.6%	-3.3%	7.0%	10.1%	-2.6%	-0.5%	6.7%
<b>Nov</b>	192,226	206,487	202,388	200,304	225,381	232,993	234,743	250,434	<b>Nov</b>	7.4%	-2.0%	-1.0%	12.5%	3.4%	0.8%	6.7%
<b>Dec</b>	171,158	183,849	188,289	219,898	217,872	212,308	203,683	220,185	<b>Dec</b>	7.4%	2.4%	16.8%	-0.9%	-2.6%	-4.1%	8.1%

## Ongoing Monthly Comparisons from 2004 thru 2011

### Average Daily Weekday by Month

Express	2004	2005	2006	2007	2008	2009	2010	2011	Percentage Increase/Decrease							
									2004/ 2005	2005/ 2006	2006/ 2007	2007/ 2008	2007/ 2008	2009/ 2010	2010/ 2011	
Jan	4,849	5,279	5,606	5,852	6,501	7,297	6,208	6,524	Jan	8.9%	6.2%	4.4%	11.1%	12.2%	-14.9%	5.1%
Feb	4,349	5,297	5,549	5,848	6,341	7,081	6,165	6,444	Feb	21.8%	4.8%	5.4%	8.4%	11.7%	-12.9%	4.5%
Mar	4,727	5,432	5,165	5,919	6,853	6,965	6,221	6,663	Mar	14.9%	-4.9%	14.6%	15.8%	1.6%	-10.7%	7.1%
Apr	4,841	5,671	5,488	6,298	7,423	6,765	6,453	6,752	Apr	17.1%	-3.2%	14.8%	17.9%	-8.9%	-4.6%	4.6%
May	5,069	5,608	6,136	6,561	7,504	6,609	6,430	6,755	May	10.6%	9.4%	6.9%	14.4%	-11.9%	-2.7%	5.1%
Jun	5,139	5,576	5,820	6,474	8,579	6,803	6,250	6,532	Jun	8.5%	4.4%	11.2%	32.5%	-20.7%	-8.1%	4.5%
Jul	4,680	5,263	5,511	6,391	8,819	6,117	5,748	6,247	Jul	12.5%	4.7%	16.0%	38.0%	-30.6%	-6.0%	8.7%
Aug	5,233	5,825	6,022	6,169	7,823	6,688	6,024	6,515	Aug	11.3%	3.4%	2.4%	26.8%	-14.5%	-9.9%	8.2%
Sep	5,335	6,582	5,915	6,134	8,351	6,694	6,277	6,606	Sep	23.4%	-10.1%	3.7%	36.1%	-19.8%	-6.2%	5.2%
Oct	5,256	6,234	5,841	6,238	7,531	6,241	5,870	6,390	Oct	18.6%	-6.3%	6.8%	20.7%	-17.1%	-5.9%	8.9%
Nov	4,850	5,800	5,555	5,962	6,604	5,775	5,997	6,623	Nov	19.6%	-4.2%	7.3%	10.8%	-12.6%	3.8%	10.4%
Dec	4,293	4,906	5,101	4,300	6,769	5,492	5,141	5,678	Dec	14.3%	4.0%	-15.7%	57.4%	-18.9%	-6.4%	10.4%

### Average Daily Saturday by Month

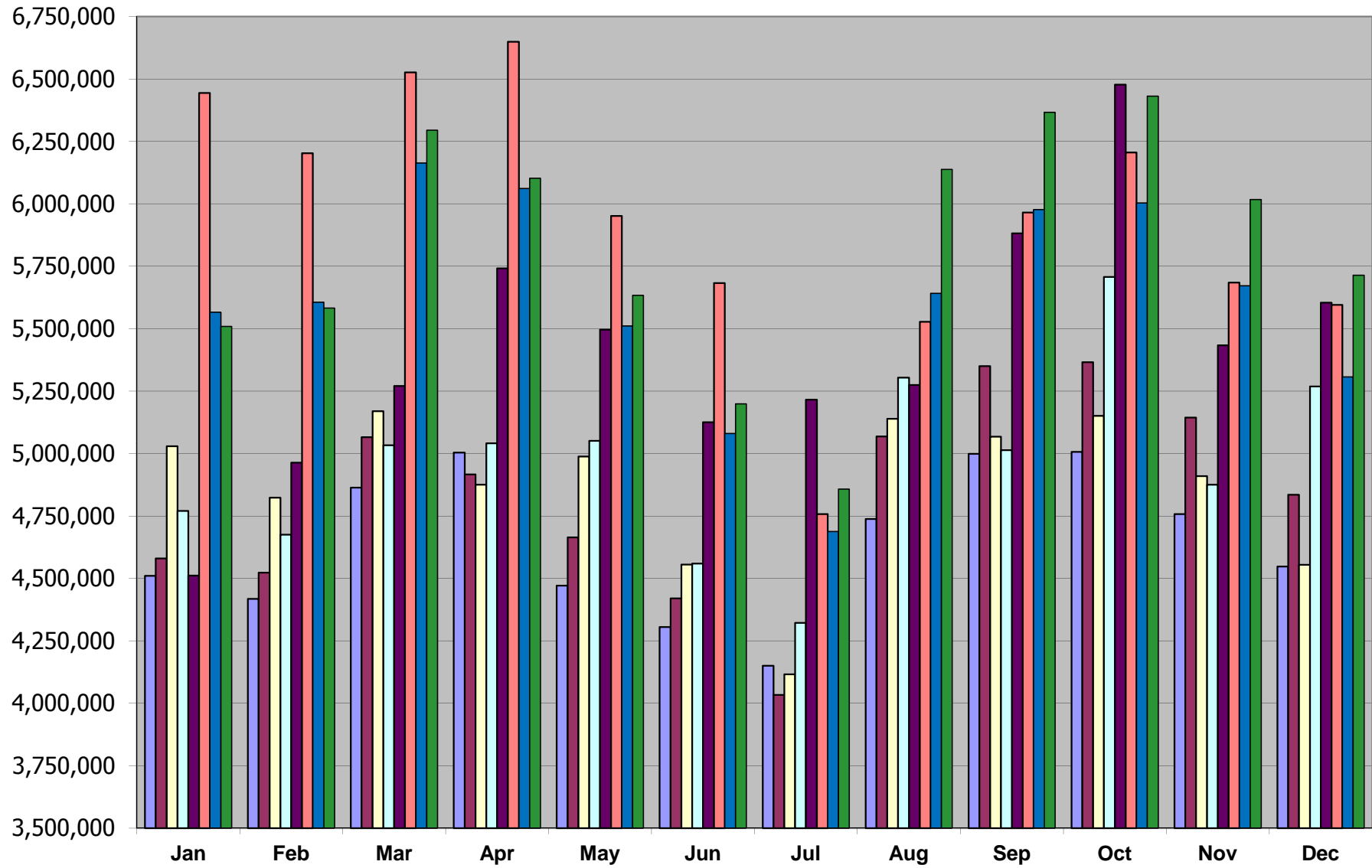
	2004	2005	2006	2007	2008	2009	2010	2011	Percentage Increase/Decrease							
									2004/ 2005	2005/ 2006	2006/ 2007	2007/ 2008	2008/ 2009	2009/ 2010	2010/ 2011	
Jan	89,344	92,476	103,441	95,353	87,074	140,192	120,600	111,706	Jan	3.5%	11.9%	-7.8%	-8.7%	61.0%	-14.0%	-7.4%
Feb	94,122	90,194	104,667	100,261	107,674	143,085	119,309	116,800	Feb	-4.2%	16.0%	-4.2%	7.4%	32.9%	-16.6%	-2.1%
Mar	94,257	94,166	92,422	98,360	108,519	137,880	124,511	128,909	Mar	-0.1%	-1.9%	6.4%	10.3%	27.1%	-9.7%	3.5%
Apr	93,263	95,908	100,782	97,471	114,730	136,658	124,751	123,592	Apr	2.8%	5.1%	-3.3%	17.7%	19.1%	-8.7%	-0.9%
May	92,886	93,100	97,498	96,984	111,812	127,449	116,199	114,792	May	0.2%	4.7%	-0.5%	15.3%	14.0%	-8.8%	-1.2%
Jun	89,045	92,611	93,674	95,549	107,507	120,636	104,925	109,840	Jun	4.0%	1.1%	2.0%	12.5%	12.2%	-13.0%	4.7%
Jul	84,528	88,844	89,101	100,404	106,728	100,163	102,905	106,423	Jul	5.1%	0.3%	12.7%	6.3%	-6.2%	2.7%	3.4%
Aug	93,726	97,427	98,049	101,375	105,955	107,687	108,310	140,461	Aug	3.9%	0.6%	3.4%	4.5%	1.6%	0.6%	29.7%
Sep	93,742	102,863	99,518	104,243	112,952	114,311	120,862	128,516	Sep	9.7%	-3.3%	4.7%	8.4%	1.2%	5.7%	6.3%
Oct	97,667	105,622	98,235	111,081	124,754	123,026	120,898	134,183	Oct	8.1%	-7.0%	13.1%	12.3%	-1.4%	-1.7%	11.0%
Nov	95,854	103,388	98,165	100,204	122,433	117,398	116,777	124,989	Nov	7.9%	-5.1%	2.1%	22.2%	-4.1%	-0.5%	7.0%
Dec	93,493	95,777	97,946	122,473	118,494	114,287	121,881	125,115	Dec	2.4%	2.3%	25.0%	-3.2%	-3.6%	6.6%	2.7%

## Ongoing Monthly Comparisons from 2004 thru 2011

### Average Daily Sunday by Month

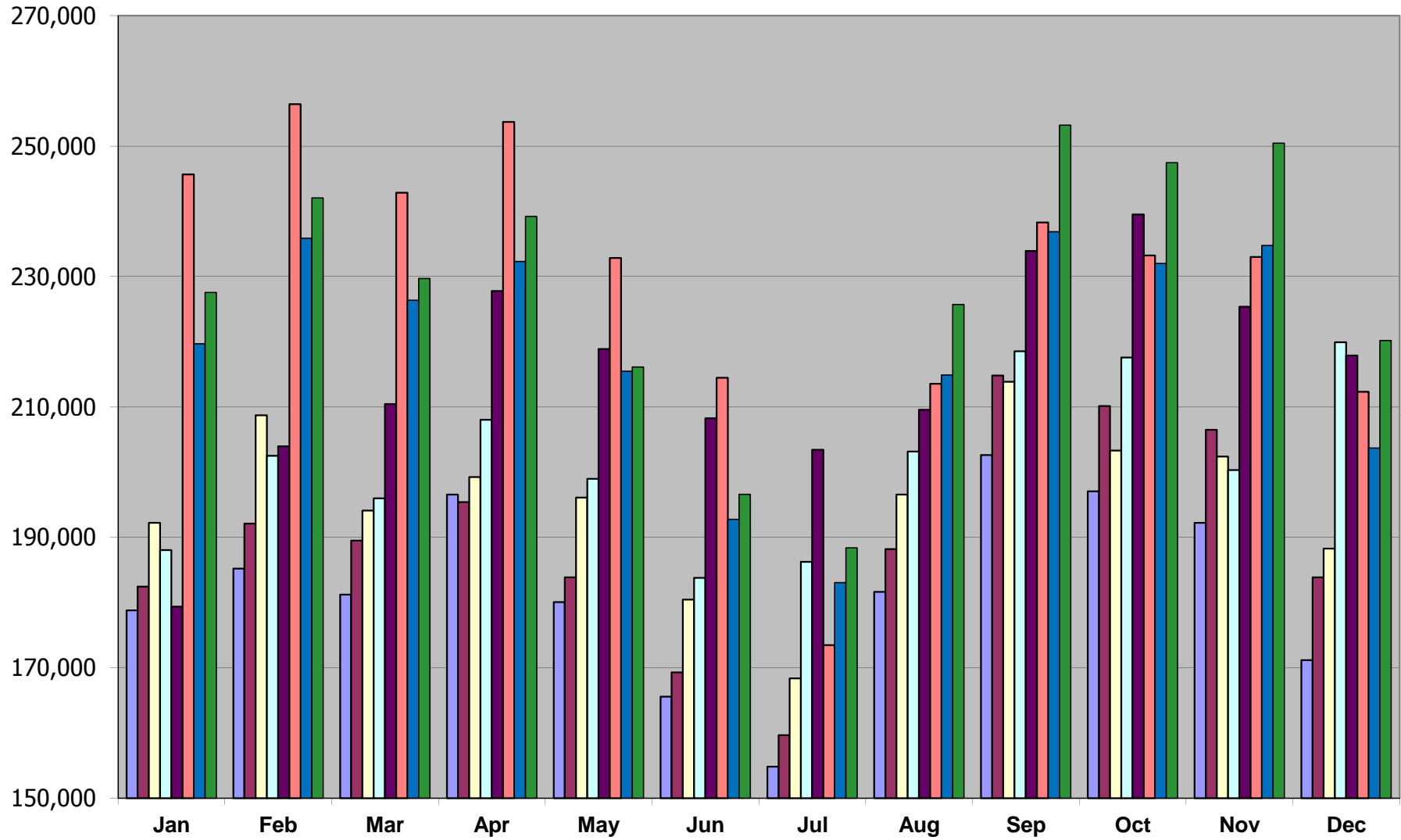
	<u>2004</u>	<u>2005</u>	<u>2006</u>	<u>2007</u>	<u>2008</u>	<u>2009</u>	<u>2010</u>	<u>2011</u>	<u>Percentage Increase/Decrease</u>							
									<u>2004/2005</u>	<u>2005/2006</u>	<u>2006/2007</u>	<u>2007/2008</u>	<u>2008/2009</u>	<u>2009/2010</u>	<u>2010/2011</u>	
<b>Jan</b>	44,518	50,930	54,232	50,447	47,883	89,309	77,819	78,678	<b>Jan</b>	14.4%	6.5%	-7.0%	-5.1%	86.5%	-12.9%	1.1%
<b>Feb</b>	50,253	53,701	57,753	56,214	65,579	90,273	73,334	87,183	<b>Feb</b>	6.9%	7.5%	-2.7%	16.7%	37.7%	-18.8%	18.9%
<b>Mar</b>	52,632	51,336	54,205	57,664	61,579	95,677	78,998	85,930	<b>Mar</b>	-2.5%	5.6%	6.4%	6.8%	55.4%	-17.4%	8.8%
<b>Apr</b>	50,045	53,553	55,216	56,578	67,852	93,272	77,700	80,207	<b>Apr</b>	7.0%	3.1%	2.5%	19.9%	37.5%	-16.7%	3.2%
<b>May</b>	50,424	52,168	56,953	57,196	68,861	87,779	74,956	76,983	<b>May</b>	3.5%	9.2%	0.4%	20.4%	27.5%	-14.6%	2.7%
<b>Jun</b>	47,810	50,908	53,024	55,304	65,616	83,156	70,673	72,876	<b>Jun</b>	6.5%	4.2%	4.3%	18.6%	26.7%	-15.0%	3.1%
<b>Jul</b>	44,739	48,633	50,839	57,568	66,858	65,257	64,884	76,390	<b>Jul</b>	8.7%	4.5%	13.2%	16.1%	-2.4%	-0.6%	17.7%
<b>Aug</b>	50,402	53,820	56,854	57,220	67,462	72,781	71,037	79,771	<b>Aug</b>	6.8%	5.6%	0.6%	17.9%	7.9%	-2.4%	12.3%
<b>Sep</b>	50,875	57,696	57,029	59,430	69,989	75,689	77,801	79,613	<b>Sep</b>	13.4%	-1.2%	4.2%	17.8%	8.1%	2.8%	2.3%
<b>Oct</b>	53,754	58,625	57,211	66,402	76,854	81,026	80,621	85,700	<b>Oct</b>	9.1%	-2.4%	16.1%	15.7%	5.4%	-0.5%	6.3%
<b>Nov</b>	47,093	54,461	53,328	54,866	70,573	73,566	87,934	90,222	<b>Nov</b>	15.6%	-2.1%	2.9%	28.6%	4.2%	19.5%	2.6%
<b>Dec</b>	46,167	50,906	49,911	66,626	65,827	69,665	74,695	75,867	<b>Dec</b>	10.3%	-2.0%	33.5%	-1.2%	5.8%	7.2%	1.6%

### Total Monthly Ridership



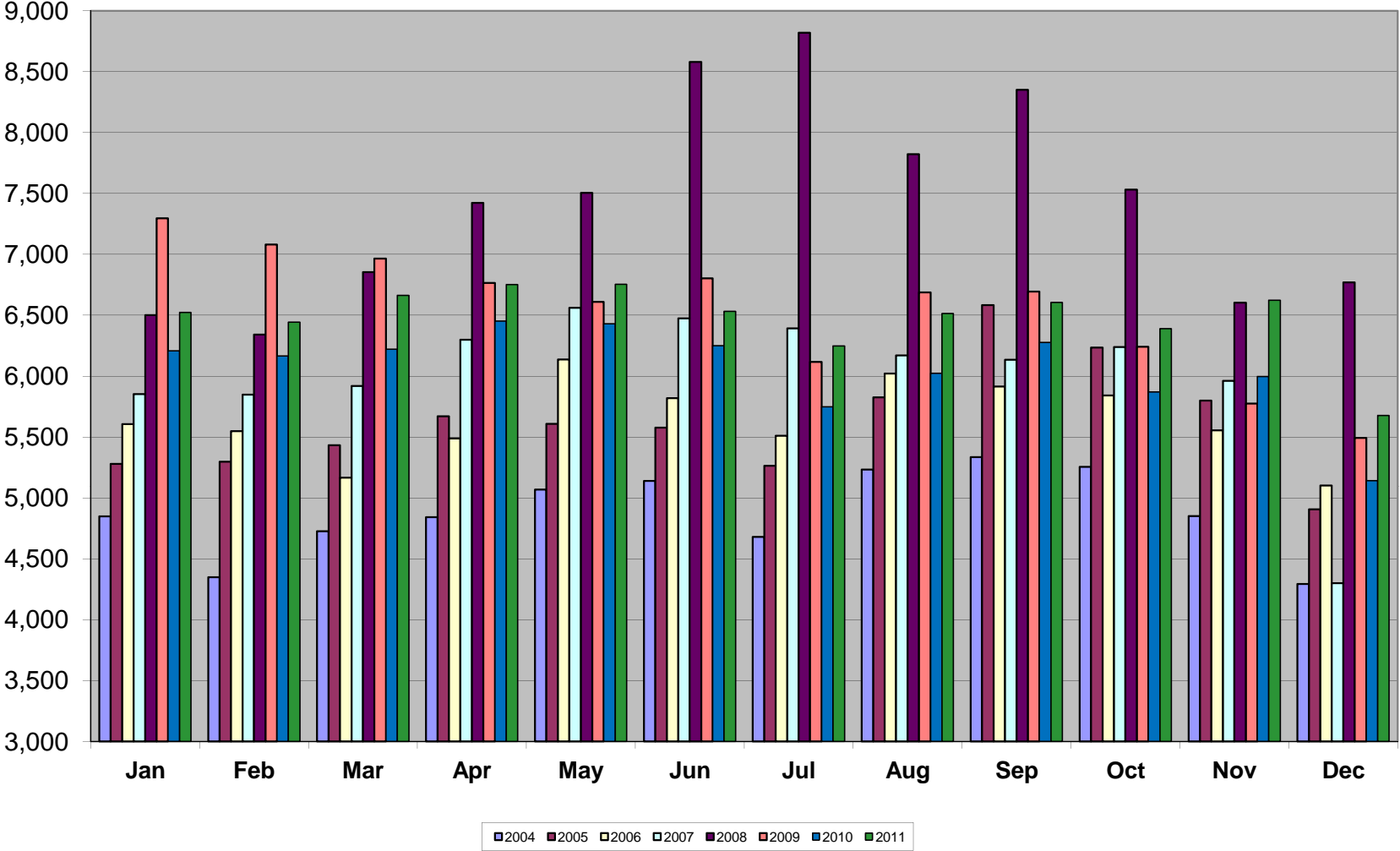
■ 2004 ■ 2005 ■ 2006 ■ 2007 ■ 2008 ■ 2009 ■ 2010 ■ 2011

### Weekday Local Average Daily Ridership

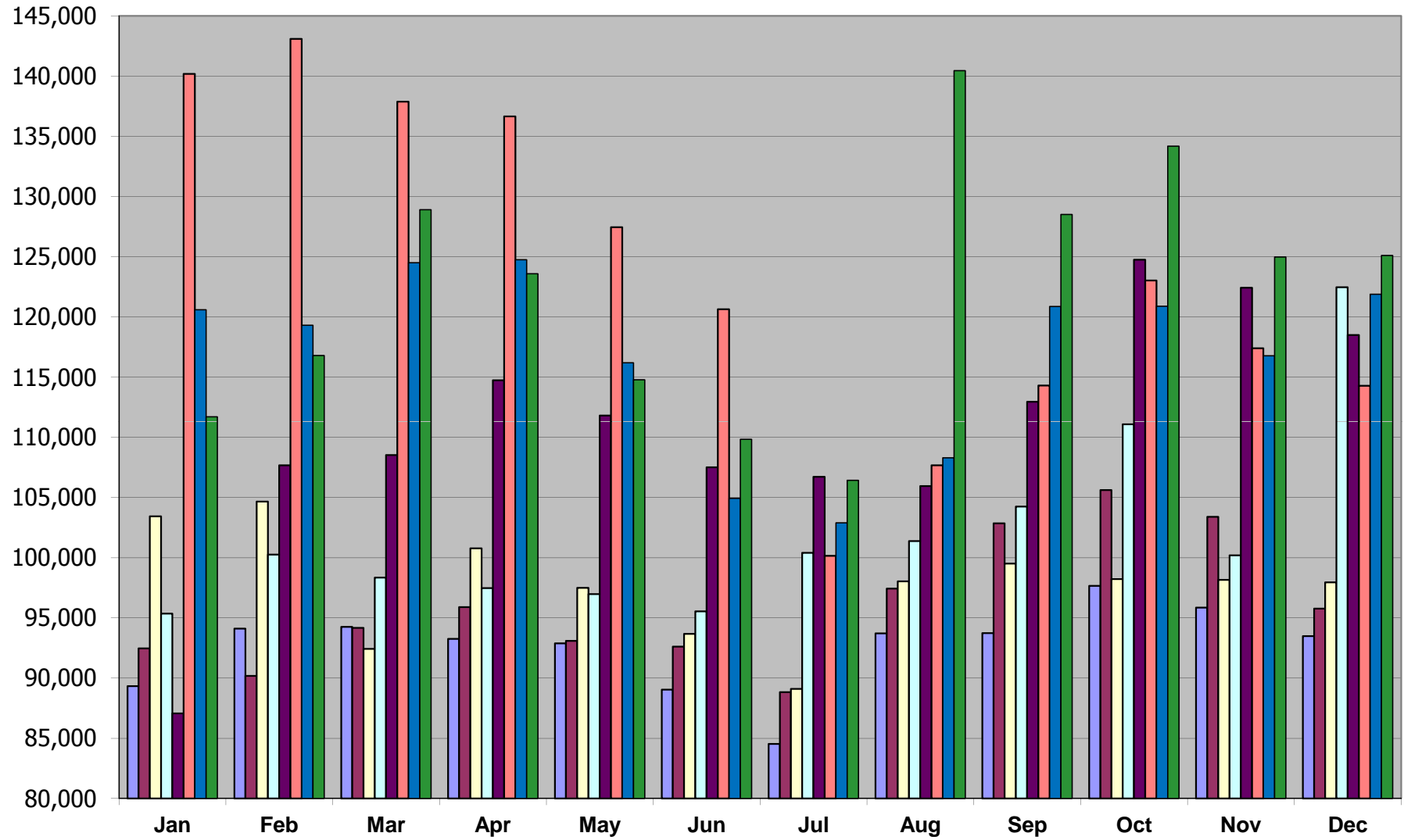


Legend: 2004 2005 2006 2007 2008 2009 2010 2011

Weekday Express Average Daily Ridership

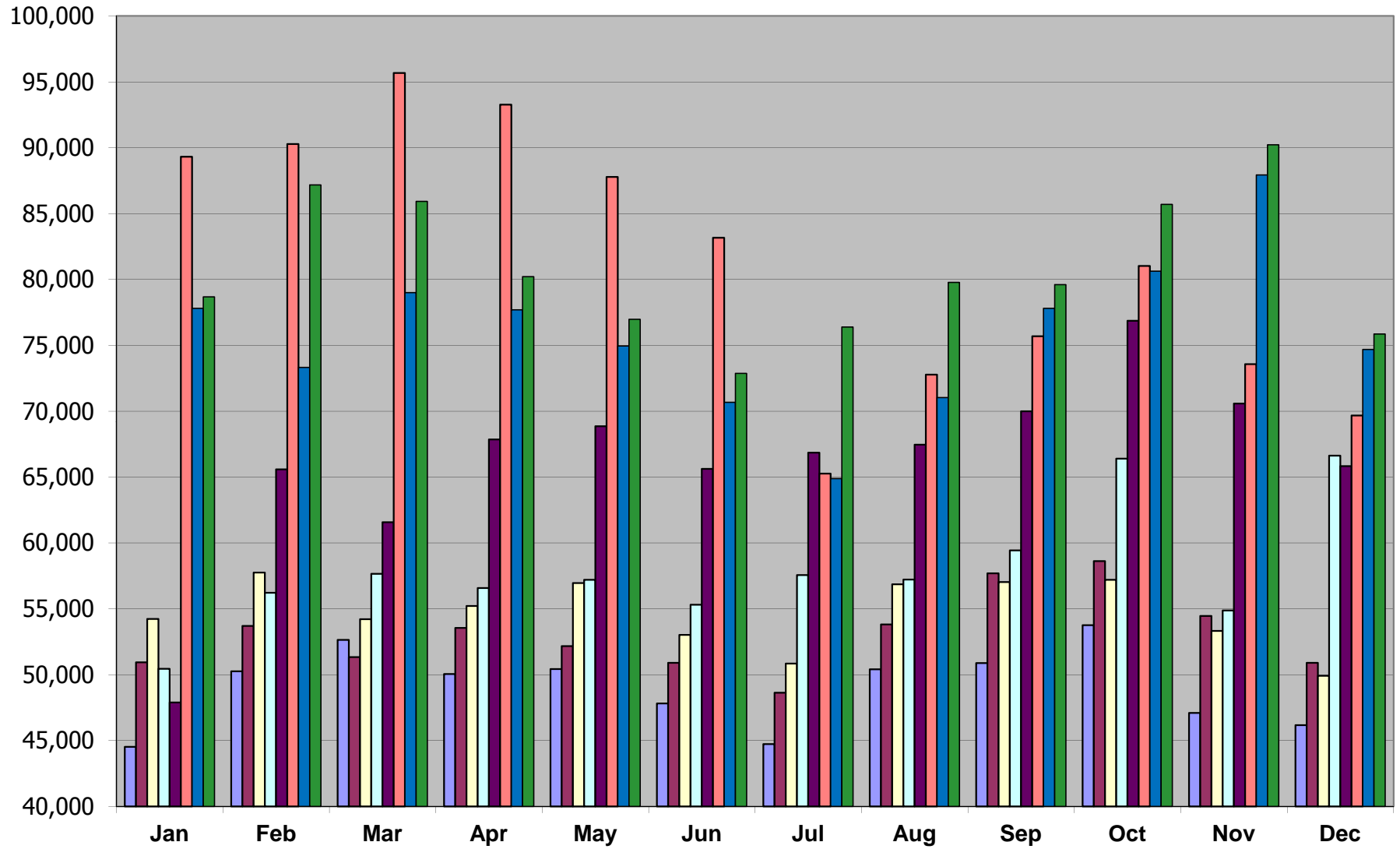


### Saturday Average Daily Ridership



■ 2004 ■ 2005 ■ 2006 ■ 2007 ■ 2008 ■ 2009 ■ 2010 ■ 2011

### Sunday Average Daily Ridership



Legend: 2004 2005 2006 2007 2008 2009 2010 2011