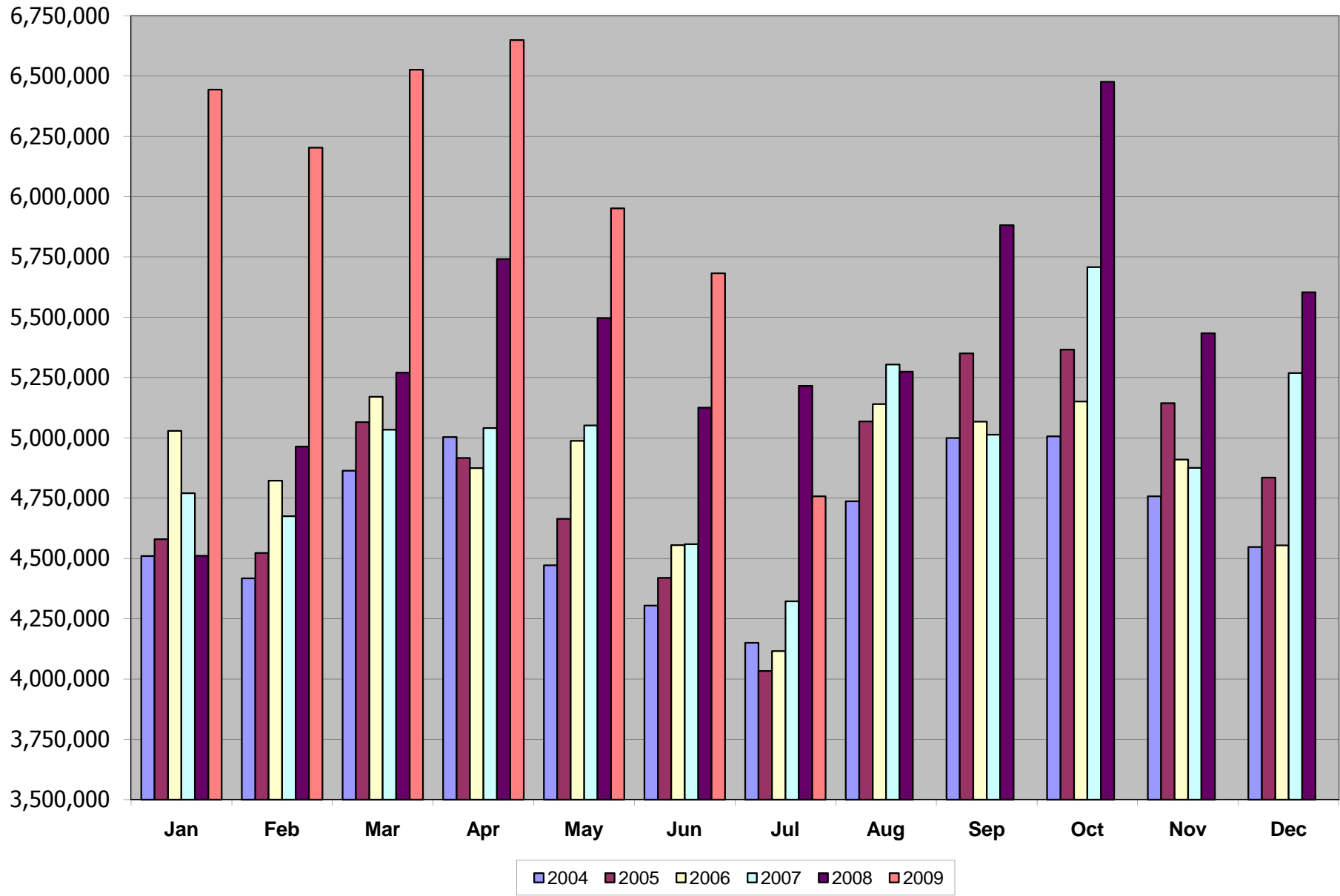
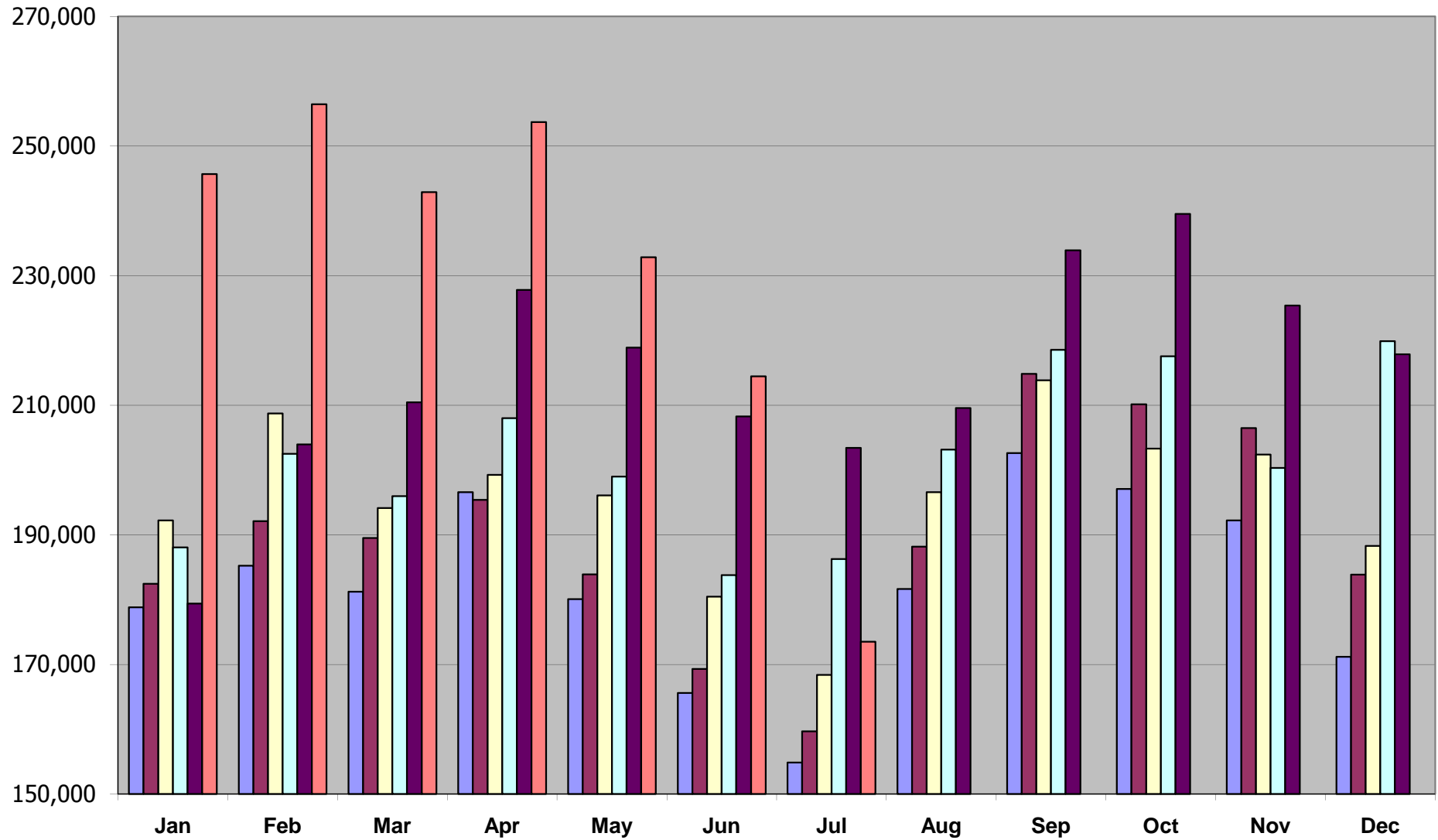


Total Monthly Ridership

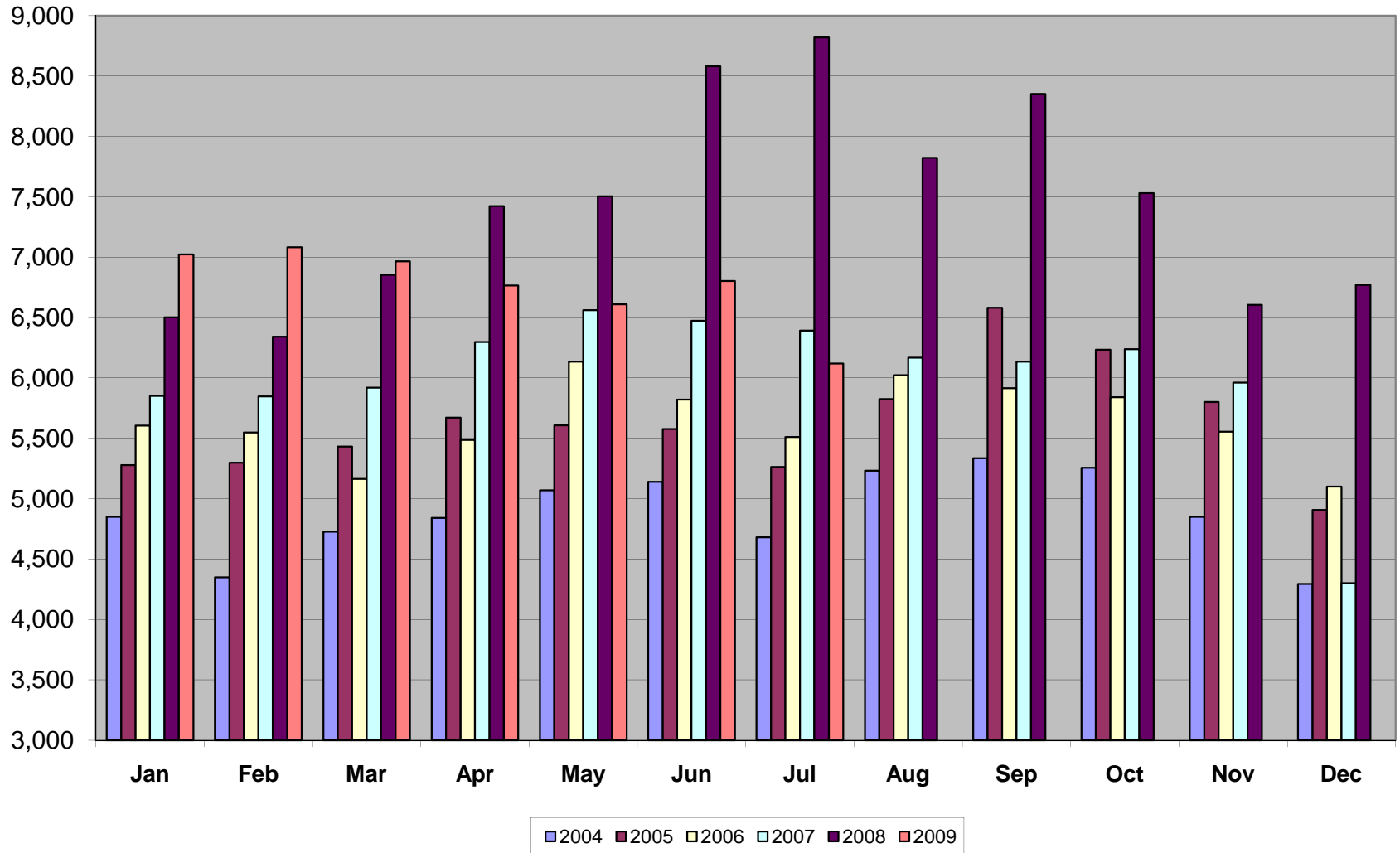


Weekday Local Average Daily Ridership

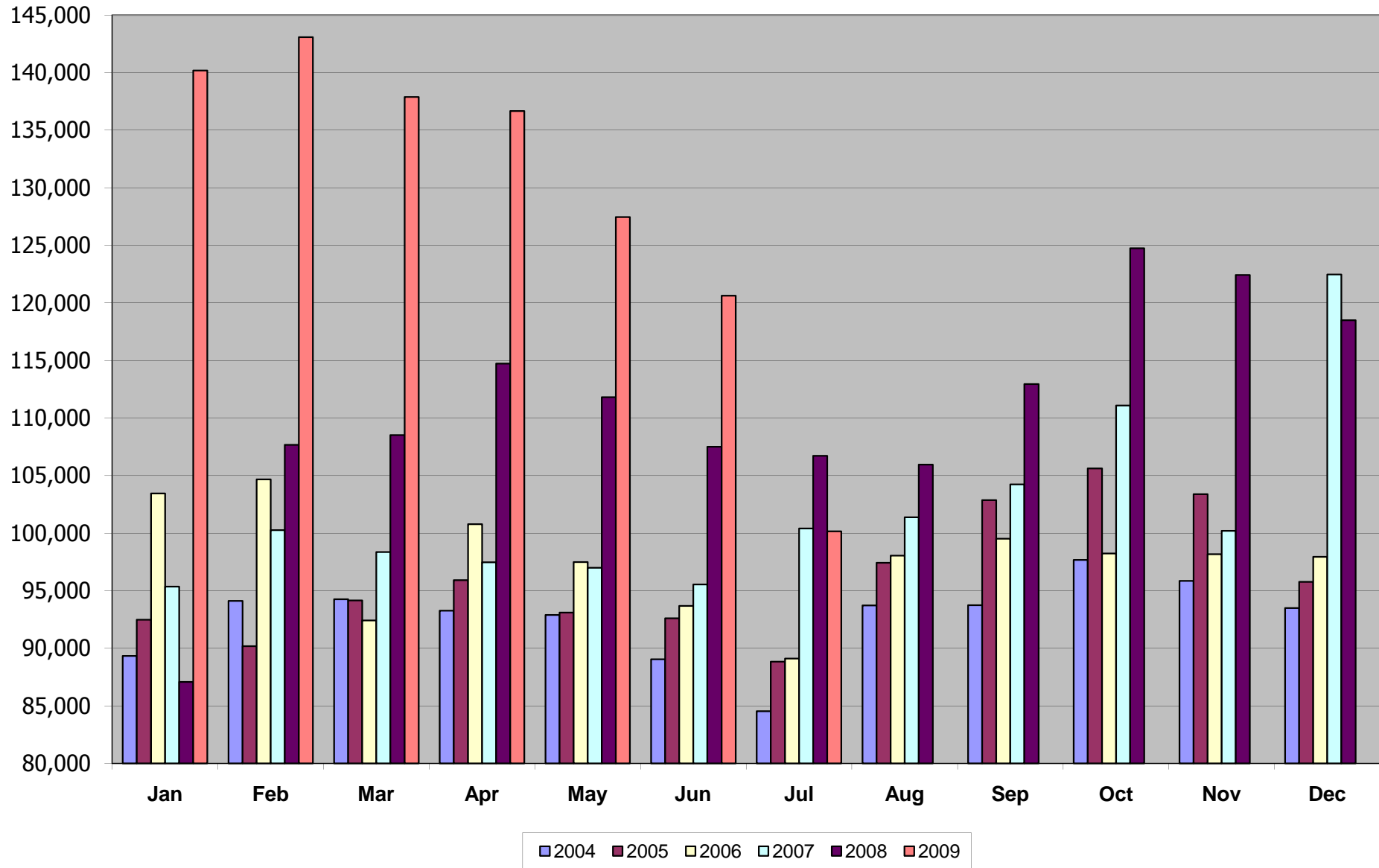


■ 2004 ■ 2005 ■ 2006 ■ 2007 ■ 2008 ■ 2009

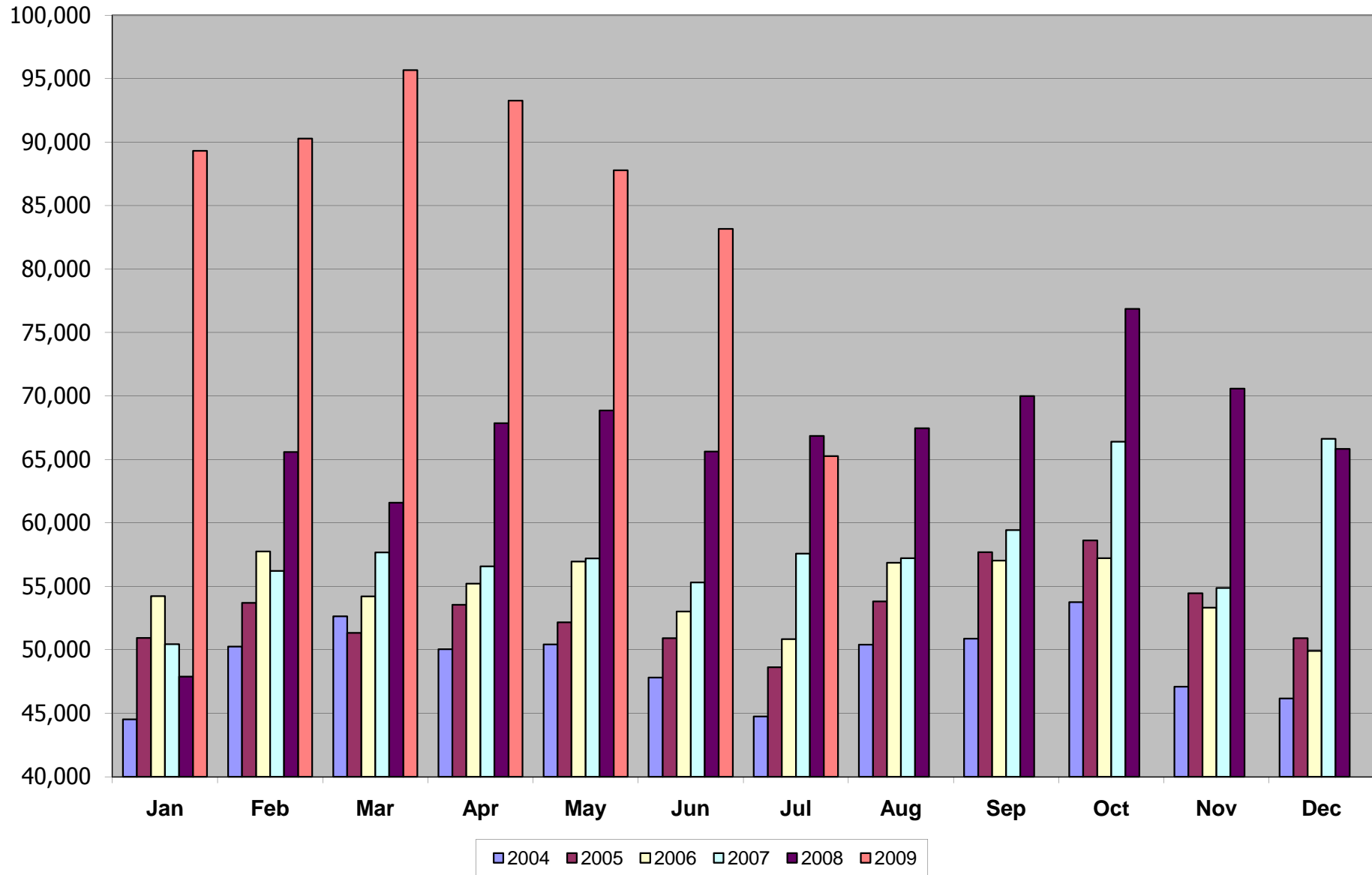
Weekday Express Average Daily Ridership



Saturday Average Daily Ridership



Sunday Average Daily Ridership



Ongoing Monthly Comparisons from Jan04 thru Dec09

Monthly Ridership

							Percentage Increase/Decrease					
	<u>2004</u>	<u>2005</u>	<u>2006</u>	<u>2007</u>	<u>2008</u>	<u>2009</u>	<u>2004/2005</u>	<u>2005/2006</u>	<u>2006/2007</u>	<u>2007/2008</u>	<u>2008/2009</u>	
Jan	4,510,212	4,579,568	5,029,162	4,770,159	4,511,065	6,444,131	Jan	1.5%	9.8%	-5.2%	-5.4%	42.9%
Feb	4,418,021	4,522,683	4,822,888	4,674,868	4,963,724	6,202,769	Feb	2.4%	6.6%	-3.1%	6.2%	25.0%
Mar	4,863,481	5,065,284	5,169,902	5,033,545	5,270,507	6,526,525	Mar	4.1%	2.1%	-2.6%	4.7%	23.8%
Apr	5,003,306	4,916,619	4,874,768	5,040,574	5,741,342	6,649,206	Apr	-1.7%	-0.9%	3.4%	13.9%	15.8%
May	4,471,234	4,663,982	4,987,925	5,051,228	5,496,427	5,951,079	May	4.3%	6.9%	1.3%	8.8%	8.3%
Jun	4,304,914	4,419,776	4,554,879	4,558,889	5,125,054	5,682,302	Jun	2.7%	3.1%	0.1%	12.4%	10.9%
Jul	4,150,523	4,033,762	4,116,002	4,321,778	5,215,992	4,757,189	Jul	-2.8%	2.0%	5.0%	20.7%	-8.8%
Aug	4,737,382	5,068,134	5,139,400	5,304,165	5,273,984		Aug	7.0%	1.4%	3.2%	-0.6%	-100.0%
Sep	4,999,006	5,349,647	5,066,946	5,013,535	5,881,334		Sep	7.0%	-5.3%	-1.1%	17.3%	-100.0%
Oct	5,006,669	5,365,782	5,150,801	5,707,430	6,476,733		Oct	7.2%	-4.0%	10.8%	13.5%	-100.0%
Nov	4,757,583	5,144,224	4,909,560	4,875,076	5,433,295		Nov	8.1%	-4.6%	-0.7%	11.5%	-100.0%
Dec	4,547,032	4,834,702	4,554,438	5,268,906	5,603,751		Dec	6.3%	-5.8%	15.7%	6.4%	-100.0%

Average Daily Weekday by Month

Local							Percentage Increase/Decrease					
	<u>2004</u>	<u>2005</u>	<u>2006</u>	<u>2007</u>	<u>2008</u>	<u>2009</u>	<u>2004/2005</u>	<u>2005/2006</u>	<u>2006/2007</u>	<u>2007/2008</u>	<u>2008/2009</u>	
Jan	178,818	182,458	192,239	188,047	179,373	245,668	Jan	2.0%	5.4%	-2.2%	-4.6%	37.0%
Feb	185,225	192,105	208,728	202,499	203,955	256,426	Feb	3.7%	8.7%	-3.0%	0.7%	25.7%
Mar	181,212	189,519	194,121	195,984	210,447	242,868	Mar	4.6%	2.4%	1.0%	7.4%	15.4%
Apr	196,571	195,410	199,254	208,017	227,775	253,711	Apr	-0.6%	2.0%	4.4%	9.5%	11.4%
May	180,076	183,884	196,088	198,979	218,877	232,845	May	2.1%	6.6%	1.5%	10.0%	6.4%
Jun	165,576	169,285	180,471	183,781	208,263	214,473	Jun	2.2%	6.6%	1.8%	13.3%	3.0%
Jul	154,855	159,688	168,387	186,260	203,417	173,484	Jul	3.1%	5.4%	10.6%	9.2%	-14.7%
Aug	181,640	188,185	196,562	203,165	209,576		Aug	3.6%	4.5%	3.4%	3.2%	-100.0%
Sep	202,631	214,822	213,851	218,551	233,896		Sep	6.0%	-0.5%	2.2%	7.0%	-100.0%
Oct	197,072	210,134	203,302	217,570	239,513		Oct	6.6%	-3.3%	7.0%	10.1%	-100.0%
Nov	192,226	206,487	202,388	200,304	225,381		Nov	7.4%	-2.0%	-1.0%	12.5%	-100.0%
Dec	171,158	183,849	188,289	219,898	217,872		Dec	7.4%	2.4%	16.8%	-0.9%	-100.0%

Express							Percentage Increase/Decrease					
	<u>2004</u>	<u>2005</u>	<u>2006</u>	<u>2007</u>	<u>2008</u>	<u>2009</u>	<u>2004/2005</u>	<u>2005/2006</u>	<u>2006/2007</u>	<u>2007/2008</u>	<u>2007/2008</u>	
Jan	4,849	5,279	5,606	5,852	6,501	7,023	Jan	8.9%	6.2%	4.4%	11.1%	8.0%
Feb	4,349	5,297	5,549	5,848	6,341	7,081	Feb	21.8%	4.8%	5.4%	8.4%	11.7%
Mar	4,727	5,432	5,165	5,919	6,853	6,965	Mar	14.9%	-4.9%	14.6%	15.8%	1.6%
Apr	4,841	5,671	5,488	6,298	7,423	6,765	Apr	17.1%	-3.2%	14.8%	17.9%	-8.9%
May	5,069	5,608	6,136	6,561	7,504	6,609	May	10.6%	9.4%	6.9%	14.4%	-11.9%
Jun	5,139	5,576	5,820	6,474	8,579	6,803	Jun	8.5%	4.4%	11.2%	32.5%	-20.7%
Jul	4,680	5,263	5,511	6,391	8,819	6,119	Jul	12.5%	4.7%	16.0%	38.0%	-30.6%

Aug	5,233	5,825	6,022	6,169	7,823
Sep	5,335	6,582	5,915	6,134	8,351
Oct	5,256	6,234	5,841	6,238	7,531
Nov	4,850	5,800	5,555	5,962	6,604
Dec	4,293	4,906	5,101	4,300	6,769

Aug	11.3%	3.4%	2.4%	26.8%	-100.0%
Sep	23.4%	-10.1%	3.7%	36.1%	-100.0%
Oct	18.6%	-6.3%	6.8%	20.7%	-100.0%
Nov	19.6%	-4.2%	7.3%	10.8%	-100.0%
Dec	14.3%	4.0%	-15.7%	57.4%	-100.0%

Average Daily Saturday by Month

							Percentage Increase/Decrease				
	<u>2004</u>	<u>2005</u>	<u>2006</u>	<u>2007</u>	<u>2008</u>	<u>2009</u>	<u>2004/2005</u>	<u>2005/2006</u>	<u>2006/2007</u>	<u>2007/2008</u>	<u>2008/2009</u>
Jan	89,344	92,476	103,441	95,353	87,074	140,192	3.5%	11.9%	-7.8%	-8.7%	61.0%
Feb	94,122	90,194	104,667	100,261	107,674	143,085	-4.2%	16.0%	-4.2%	7.4%	32.9%
Mar	94,257	94,166	92,422	98,360	108,519	137,880	-0.1%	-1.9%	6.4%	10.3%	27.1%
Apr	93,263	95,908	100,782	97,471	114,730	136,658	2.8%	5.1%	-3.3%	17.7%	19.1%
May	92,886	93,100	97,498	96,984	111,812	127,449	0.2%	4.7%	-0.5%	15.3%	14.0%
Jun	89,045	92,611	93,674	95,549	107,507	120,636	4.0%	1.1%	2.0%	12.5%	12.2%
Jul	84,528	88,844	89,101	100,404	106,728	100,163	5.1%	0.3%	12.7%	6.3%	-6.2%
Aug	93,726	97,427	98,049	101,375	105,955		3.9%	0.6%	3.4%	4.5%	-100.0%
Sep	93,742	102,863	99,518	104,243	112,952		9.7%	-3.3%	4.7%	8.4%	-100.0%
Oct	97,667	105,622	98,235	111,081	124,754		8.1%	-7.0%	13.1%	12.3%	-100.0%
Nov	95,854	103,388	98,165	100,204	122,433		7.9%	-5.1%	2.1%	22.2%	-100.0%
Dec	93,493	95,777	97,946	122,473	118,494		2.4%	2.3%	25.0%	-3.2%	-100.0%

Average Daily Sunday by Month

							Percentage Increase/Decrease				
	<u>2004</u>	<u>2005</u>	<u>2006</u>	<u>2007</u>	<u>2008</u>	<u>2009</u>	<u>2004/2005</u>	<u>2005/2006</u>	<u>2006/2007</u>	<u>2007/2008</u>	<u>2008/2009</u>
Jan	44,518	50,930	54,232	50,447	47,883	89,309	14.4%	6.5%	-7.0%	-5.1%	86.5%
Feb	50,253	53,701	57,753	56,214	65,579	90,273	6.9%	7.5%	-2.7%	16.7%	37.7%
Mar	52,632	51,336	54,205	57,664	61,579	95,677	-2.5%	5.6%	6.4%	6.8%	55.4%
Apr	50,045	53,553	55,216	56,578	67,852	93,272	7.0%	3.1%	2.5%	19.9%	37.5%
May	50,424	52,168	56,953	57,196	68,861	87,779	3.5%	9.2%	0.4%	20.4%	27.5%
Jun	47,810	50,908	53,024	55,304	65,616	83,156	6.5%	4.2%	4.3%	18.6%	26.7%
Jul	44,739	48,633	50,839	57,568	66,858	65,257	8.7%	4.5%	13.2%	16.1%	-2.4%
Aug	50,402	53,820	56,854	57,220	67,462		6.8%	5.6%	0.6%	17.9%	-100.0%
Sep	50,875	57,696	57,029	59,430	69,989		13.4%	-1.2%	4.2%	17.8%	-100.0%
Oct	53,754	58,625	57,211	66,402	76,854		9.1%	-2.4%	16.1%	15.7%	-100.0%
Nov	47,093	54,461	53,328	54,866	70,573		15.6%	-2.1%	2.9%	28.6%	-100.0%
Dec	46,167	50,906	49,911	66,626	65,827		10.3%	-2.0%	33.5%	-1.2%	-100.0%