



## MOTORISTS

Streetcars share the road with other vehicles, and streetcar operators navigate the route just like any other automobile. They obey the same traffic rules and rights of way.

- The streetcar tracks are designed to withstand automobile traffic and will not damage your vehicle.
- Leave a safe space between your vehicle and the streetcar. When sharing a lane with a streetcar, always be alert and prepared to stop.
- When parking, make sure your entire vehicle, including side mirrors, is completely inside the striping on the road.

- After parking, check for approaching streetcars as you open your door.
- Streetcars are quiet, so check your mirrors and be aware of your surroundings when driving on the streetcar route.
- Pay attention to signs, striping and signals, especially transit-only signs that indicate segments of rail where only streetcars can go.



## How to Share Our Streets with Streetcars

**FOR MOTORISTS, CYCLISTS, SCOOTER RIDERS & PEDESTRIANS**

### CONTACT INFORMATION

For more safety tips and to learn more about the project, visit [valleymetro.org/tempestreetcar](http://valleymetro.org/tempestreetcar).

[f](#) [t](#) [@](#) @valleymetro



# Streetcars are coming to Tempe—Opening 2021!

It has been more than a decade since light rail changed the urban landscape in the Valley and now a new modern streetcar will create even more connections in Tempe.

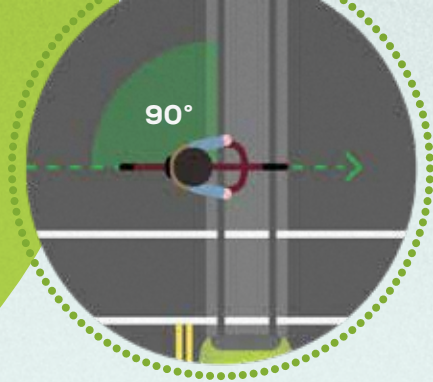
The streetcar requires motorists, bicyclists, scooter riders and pedestrians to maneuver differently in the roadway.

## BICYCLISTS & SCOOTER RIDERS

Bicyclists and scooter riders are sharing roads with streetcars across the country, but there are a few important tips to help make everyone's journey more enjoyable:

### Don't Get Stuck!

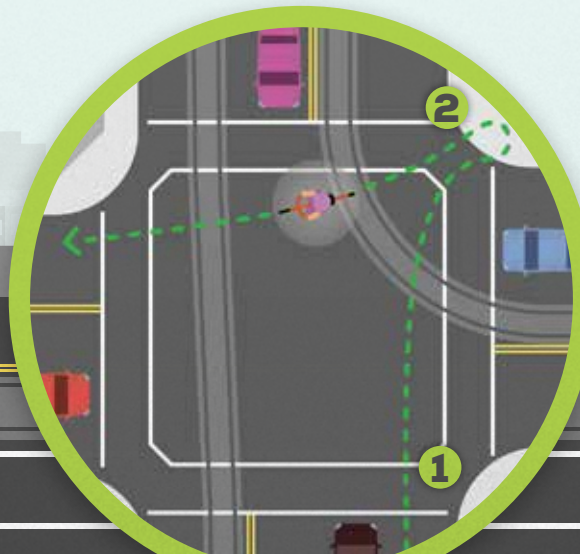
Train track grooves are slightly wider than a typical bike or scooter tire, meaning tires may become stuck in the trackway. Always avoid riding between the rails, where it can be difficult to maneuver in the tight space.



- When crossing the tracks, always do so in as close to a 90-degree angle as possible. Ride in an upright position as opposed to leaning into the turn.
- Streetcar tracks can become slippery when wet; exercise caution when riding near the tracks in rainy weather.
- Much of the streetcar route includes clearly marked bike lanes, but an alternative route is typically only a block away for less experienced bicyclists and scooter riders.

### When making a left turn across streetcar tracks, do so in two stages:

1. First, cross in the right lane through the intersection.
2. Second, pivot to the left to cross tracks perpendicularly at the next traffic signal.



## PEDESTRIANS

Pedestrians should be alert when walking along any city street, but especially when near the streetcar route.

- Only cross streetcar tracks at designated crosswalks. Wait for the appropriate signals and step over the track.
- Never cross or run in front of an approaching streetcar. Wait until it leaves the stop so you can clearly see motorists and cyclists in the roadway. If you can't see them, they can't see you.



- Never enter the trackway from between two parked vehicles.
- Streetcars are quiet so LOOK and LISTEN before crossing.

