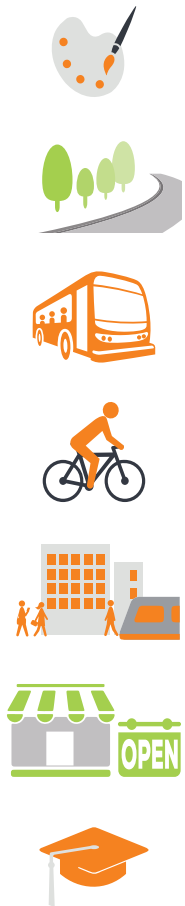


# WELCOME!

Thank you for attending today's South Central Extension Open House.

.....

The open house provides a full range of project information on current design topics:

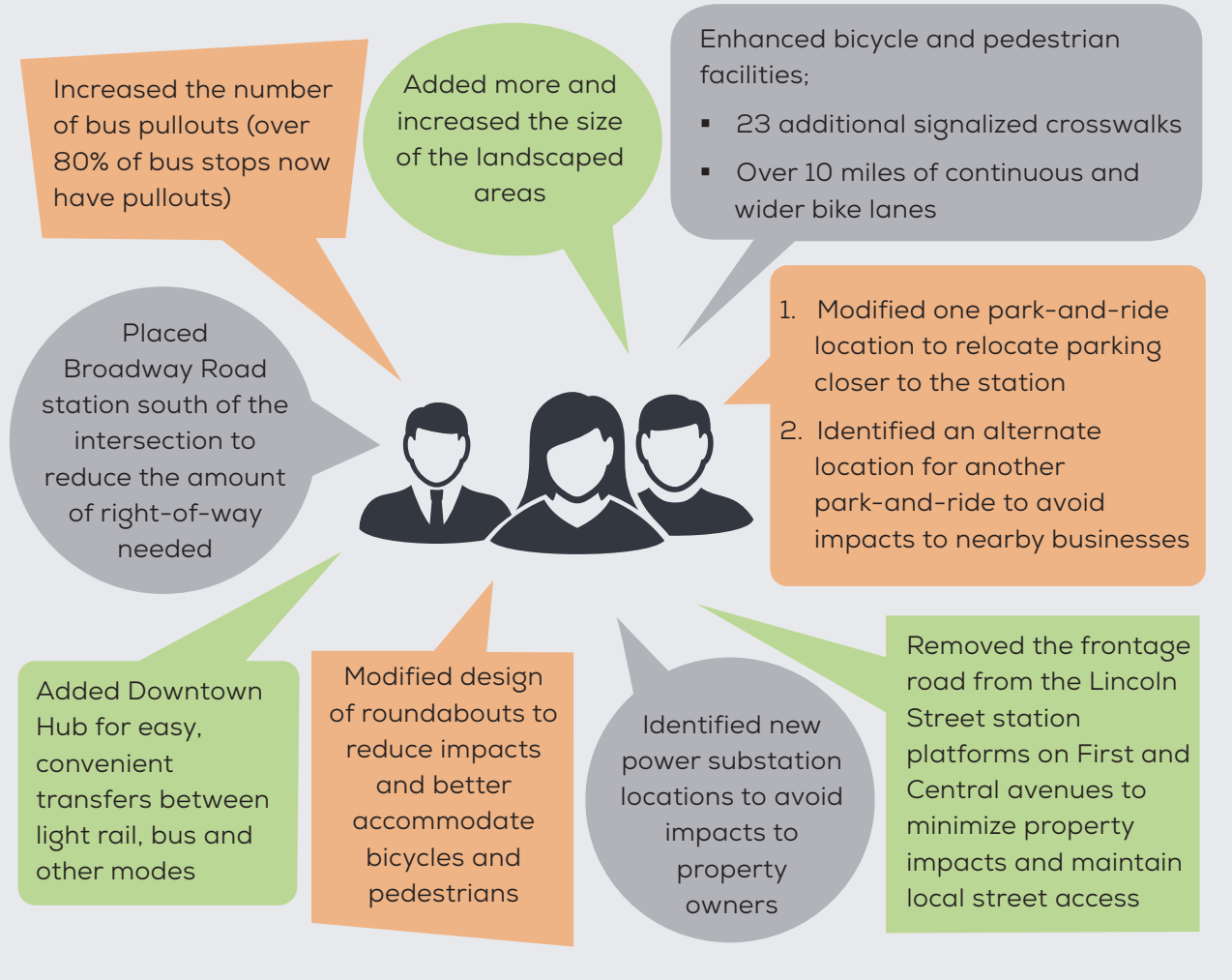


- Art Concepts
- Landscaping
- Track Alignment
- Right-of-Way
- Traffic Flow and Roadway Configuration
  - Bus Pullouts
  - Bike Lanes
  - Emergency Vehicles
- 7th Street and 7th Avenue Intersection Enhancements
- Downtown Hub
- Business Assistance
- Career and Student Development Programs

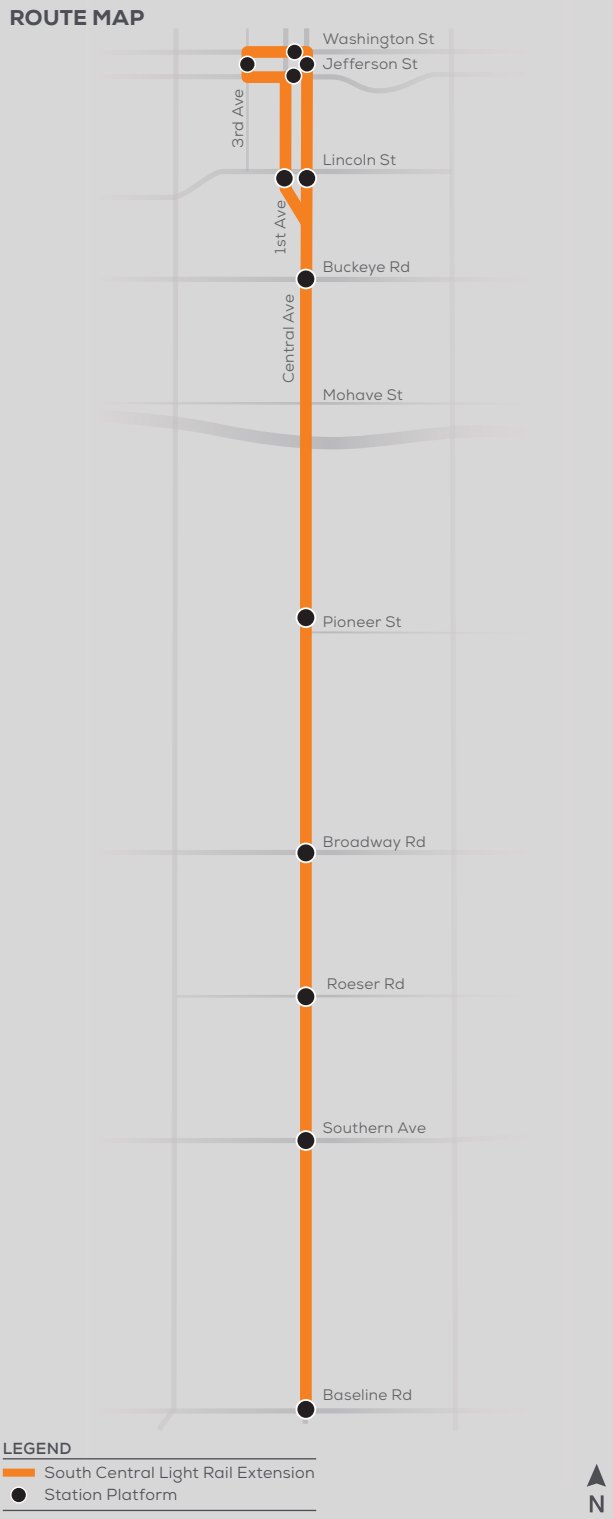
The information is presented on display boards, roll plots and through video. Information is organized by topic area and displayed in a series of "stations".

## DESIGN UPDATES

Community input has been and continues to be an important element in the design of the South Central Extension. The design team has worked to incorporate community feedback into the final design of the project; here are some highlights:



All of the information presented at the meeting is also available on the project website at [valleymetro.org/southcentral](http://valleymetro.org/southcentral)



## FOR MORE INFORMATION

Additional information is always available at [valleymetro.org/southcentral](http://valleymetro.org/southcentral), or contact a community outreach staff member:



**Julie Cruz Gilfillan**  
Downtown - Lincoln  
Community Outreach  
Coordinator

[jcruz@valleymetro.org](mailto:jcruz@valleymetro.org)  
O: 602.495.8274



**Julie Smith**  
Lincoln - Broadway  
Community Outreach  
Coordinator

[jmsmith@valleymetro.org](mailto:jmsmith@valleymetro.org)  
O: 602.744.5563



**Athena Sanchez**  
Broadway - Baseline  
Community Outreach  
Coordinator

[asanchez@valleymetro.org](mailto:asanchez@valleymetro.org)  
O: 602.523.6039



**Flor D. Mason**  
Business Assistance  
Coordinator

[fmason@valleymetro.org](mailto:fmason@valleymetro.org)  
O: 602.523.6032



/valleymetro

/valleymetroconstruction

## South Central Light Rail Extension



February  
Public Open  
House

MEETING  
GUIDE

