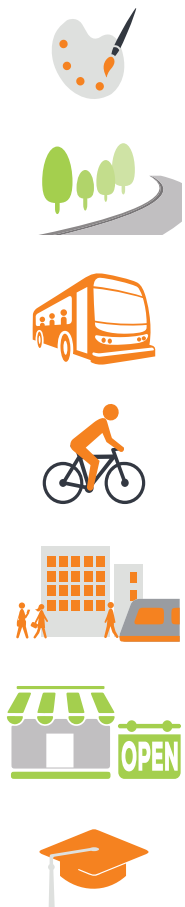


WELCOME!

Thank you for attending today's South Central Extension Open House.

.....

The open house provides a full range of project information on current design topics:

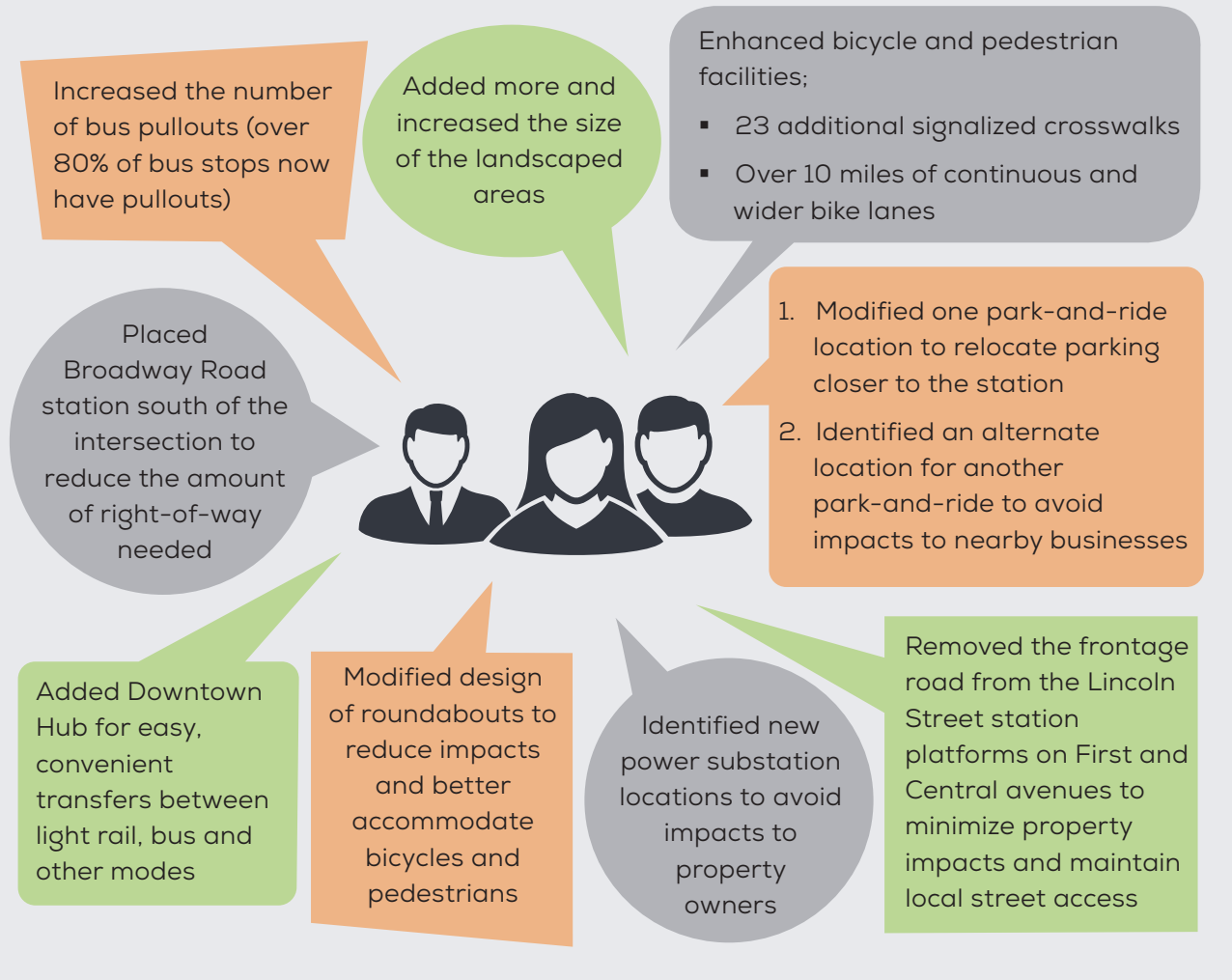


- Art Concepts
- Landscaping
- Track Alignment
- Right-of-Way
- Traffic Flow and Roadway Configuration
 - Bus Pullouts
 - Bike Lanes
 - Emergency Vehicles
- 7th Street and 7th Avenue Intersection Enhancements
- Downtown Hub
- Business Assistance
- Career and Student Development Programs

The information is presented on display boards, roll plots and through video. Information is organized by topic area and displayed in a series of "stations".

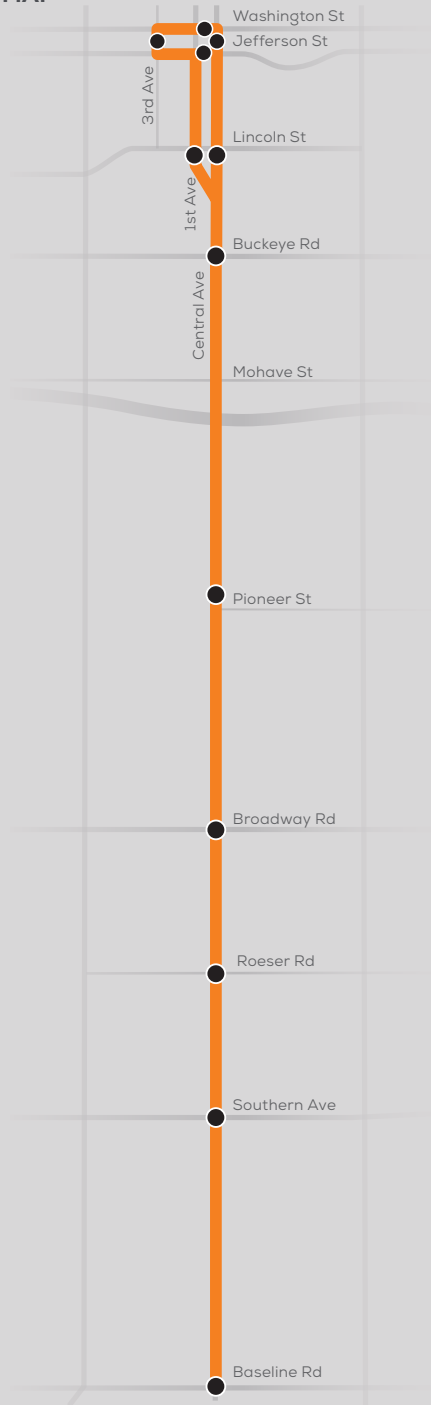
DESIGN UPDATES

Community input has been and continues to be an important element in the design of the South Central Extension. The design team has worked to incorporate community feedback into the final design of the project; here are some highlights:



All of the information presented at the meeting is also available on the project website at valleymetro.org/southcentral

ROUTE MAP



LEGEND
— South Central Light Rail Extension
 ● Station Platform



FOR MORE INFORMATION

Additional information is always available at valleymetro.org/southcentral, or contact a community outreach staff member:



Julie Cruz Gilfillan
 Downtown - Lincoln
 Community Outreach
 Coordinator

jcruz@valleymetro.org
 O: 602.495.8274



Julie Smith
 Lincoln - Broadway
 Community Outreach
 Coordinator

jmsmith@valleymetro.org
 O: 602.744.5563



Athena Sanchez
 Broadway - Baseline
 Community Outreach
 Coordinator

asanchez@valleymetro.org
 O: 602.523.6039



Flor D. Mason
 Business Assistance
 Coordinator

fmason@valleymetro.org
 O: 602.523.6032



  /valleymetro
 /valleymetroconstruction

South Central Light Rail Extension



February
 Public Open
 House

.....
**MEETING
 GUIDE**

